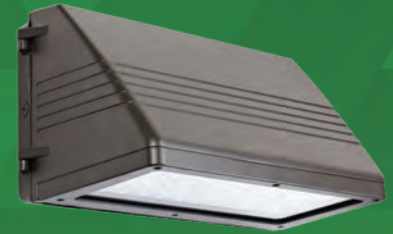




GKOWP02 45W / 70W



GKOWP02 90W / 135W

Product Overview

High performing, DLC Qualified series GKOWP02 Full Cutoff Wall Packs are an energy-efficient replacement for a traditional metal halide wall pack, up to 400W. The full cutoff design is fully compliant with Dark Sky requirements, minimizing vertical light to reduce glare and light pollution.

Key Features

CONSTRUCTION:

- Rugged die-cast aluminum housing.
- Housing has direct contact with the driver to help maintain low temperature and long lifespan.
- Housing is completely sealed against moisture and environmental contaminants.

FINISH:

- The exterior is protected by a rust-resistant powder coat finish that provides superior resistance to weathering and corrosion.

OPTICS:

- In full compliance with Dark Sky requirements, minimizing light pollution.
- Light engines are available in standard 4000K and 5000K configurations.
- A range of lumen options available from 4,800 to 14,000 Lumens, replaces up to 400W metal halide.
- Impact and UV-resistant polycarbonate lens is precisely designed to give a specific light distribution, maximizing efficiency and application spacing.

ELECTRICAL:

- Universal 120-277V or 347V input voltage.
- THD: $\leq 20\%$, Power Factor: $\geq 90\%$.

CONTROLS:

- Optional button photocell for additional energy savings - PO 120-277V.

INSTALLATION:

- Wall mount or junction box mount options are available.
- Easy installation with integrated level bubble and hinged door.

LIFESPAN:

- Estimated 50,000-hour LED lifespan based on IES LM-80 results and TM-21 calculations.

LISTINGS:

- DesignLights Consortium® (DLC) qualified.
- UL listed for wet locations.
- Rated for ambient operating temperature -40°F to 122°F (-40°C to 50°C).



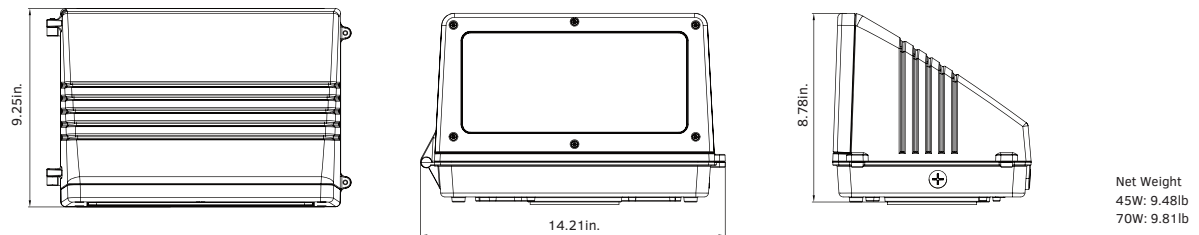
Performance Data

Lumen Output

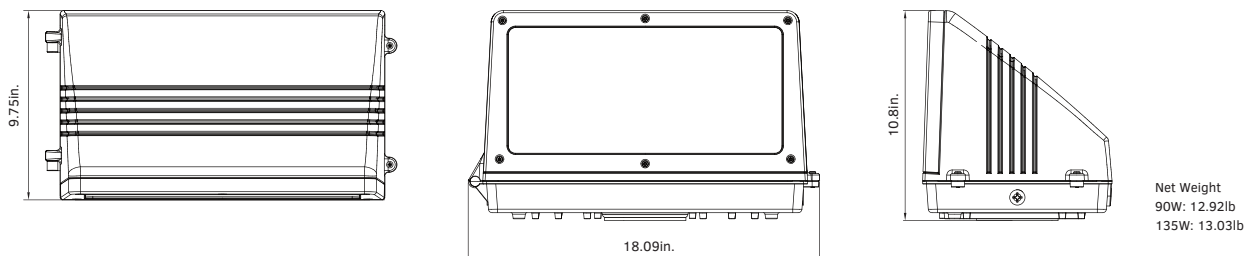
| System Watts | Voltage | 4000K(70CRI) | | 5000K(70CRI) | |
|--------------|----------|--------------|----------|--------------|----------|
| | | Lumens | Efficacy | Lumens | Efficacy |
| 45W | 120-277V | 4846lm | 104lm/W | 4900lm | 109lm/W |
| 50W | 347V | 4800lm | 96lm/W | 5000lm | 100lm/W |
| 70W | 120-277V | 7327lm | 104lm/W | 7350lm | 105lm/W |
| 75W | 347V | 7400lm | 99lm/W | 7500lm | 100lm/W |
| 90W | 120-277V | 9378lm | 103lm/W | 9500lm | 106lm/W |
| 95W | 347V | 9300lm | 98lm/W | 9500lm | 100lm/W |
| 135W | 120-277V | 13603lm | 97m/W | 14000lm | 104lm/W |
| 145W | 347V | 13600lm | 94lm/W | 14000lm | 97lm/W |

Dimensions & Weight

GKOWP02: 45W & 70W



GKOWP02: 90W & 135W



Ordering Information

Full Cutoff Wall Pack Series GKOWP02

Example: GKOWPF90W27V50KDPO

| Fixture Type | Wattage | Voltage | CCT | Finish | Photocell (Optional) |
|--------------------------|---------------------------|--------------------------|--------------------------|-------------------------------------|--|
| <input type="checkbox"/> | <input type="checkbox"/> | <input type="checkbox"/> | <input type="checkbox"/> | <input type="checkbox"/> | <input type="checkbox"/> |
| GKOWPF | 45W 70W 90W 135W | 27V 120-277V 34V 347V | 40K 4000K 50K 5000K | D Dark Bronze B Black W White | PO 120-277V Photocell Blank Without Photocell |

Note: Not all product variations listed on this page are DLC qualified. Visit www.designlights.org/search to confirm qualification.



10330 Argonne Woods Dr. Ste. 200
Woodridge, IL 60517
Phone: 630-793-9449
Web: www.gkoled.com