



Product Overview

Series GKOHBG8 Circular High Bays feature a compact design with exceptional performance for energy-efficient commercial illumination. Options include plug and play motion sensors, Bluetooth Networked Controls, and emergency battery backups.



Key Features

CONSTRUCTION:

- Rugged die-cast aluminum housing with integral heat sink fins.
- Housing is completely sealed against moisture and environmental contaminants.

FINISH:

- The exterior is protected by a black rust-resistant polyester powder coat finish that provides superior resistance to weathering and corrosion.

OPTICS:

- Light engines are available in standard 4000K and 5000K configurations with a 2 CCT control.
- A range of lumen options available from 10,000 to 35,000 Lumens, replaces up to 400W metal halide.
- Impact and UV-resistant polycarbonate lens is precisely designed to give a specific light distribution, maximizing efficiency and application spacing.
- Optional aluminum reflector available for different beam angles.

ELECTRICAL:

- Standard 120-277V input voltage.
- Standard 6KV surge protection.
- 0-10V dimming driver(s) as default for a dimming range of 100% to 10%.
- THD: ≤20%, Power Factor: ≥90%.

CONTROLS:

- Optional center-mounted, plug & play multi-level motion sensor - ANT-6-4T.
- Optional emergency battery backup provides up to 90 minutes of operation during outages.
- Bluetooth networked controls that are DLC NLC qualified, utilizing a Bluetooth SIG mesh network operated with iOS, Android, and web, optional for all models.

INSTALLATION:

- Pendant mount or hook mount options are available.
- Surface mounting with optional Adjustable Surface Mounting Bracket allows precise aiming of the fixture to 0°, 30°, 60°, 90°, 120°, 150°, or 180°.

WARRANTY:

- 5 Year Limited Warranty.

LISTINGS:

- DesignLights Consortium® (DLC) Premium qualified.
- UL Wet Location Listed.
- Rated for ambient operating temperature -40°F to 122°F (-40°C to 50°C).

Performance Data

Lumen Output

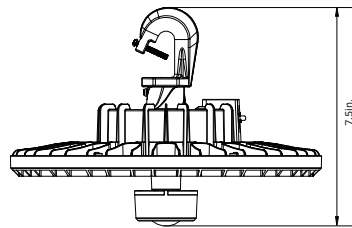
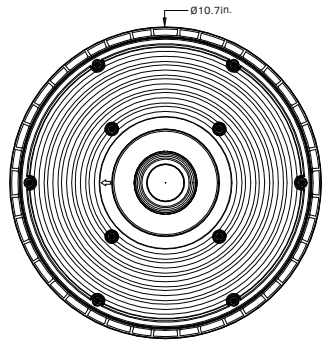
System Watts	Voltage	CRI	4000K		5000K	
			Lumens	Efficacy	Lumens	Efficacy
60W	120-277V	70	10000lm	167lm/W	10000lm	167m/W
80W	120-277V	70	13000lm	163lm/W	13000lm	163lm/W
90W	120-277V	70	15500m	172lm/W	14600lm	162m/W
100W	120-277V	70	16000lm	160lm/W	14500lm	145m/W
120W	120-277V	70	20000lm	167lm/W	19000lm	158m/W
138W	120-277V	70	24000lm	174lm/W	23000lm	167m/W
150W	120-277V	70	24000lm	160lm/W	22500lm	150m/W
184W	120-277V	70	30000lm	163lm/W	29000lm	158m/W
210W	120-277V	70	30000lm	143lm/W	30500lm	145m/W
230W	120-277V	70	35000lm	152 lm/W	35000lm	152m/W

Electrical Data

Number Of Drivers	Driver Current (mA)	Nominal Power (W)	Input Voltage (V)	Current (Amps)
1	490	60	120	0.50
		60	208	0.29
		60	240	0.25
		60	277	0.22
1	650	80	120	0.66
		80	208	0.38
		80	240	0.34
		80	277	0.29
1	680	90	120	0.75
		90	208	0.43
		90	240	0.38
		90	277	0.32
1	810	100	120	0.83
		100	208	0.48
		100	240	0.42
		100	277	0.36
1	910	120	120	1.00
		120	208	0.58
		120	240	0.50
		120	277	0.43
1	1040	138	120	1.15
		138	208	0.67
		138	240	0.58
		138	277	0.50
1	1130	150	120	1.25
		150	208	0.72
		150	240	0.63
		150	277	0.54
1	1390	184	120	1.54
		184	208	0.89
		184	240	0.77
		184	277	0.66
1	1710	210	120	1.75
		210	208	1.01
		210	240	0.88
		210	277	0.76
1	1740	230	120	1.92
		230	208	1.11
		230	240	0.96
		230	277	0.83

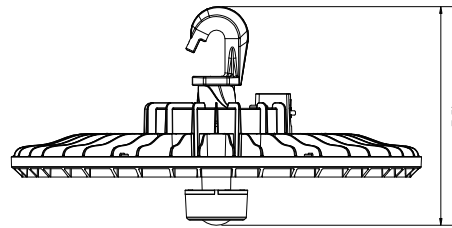
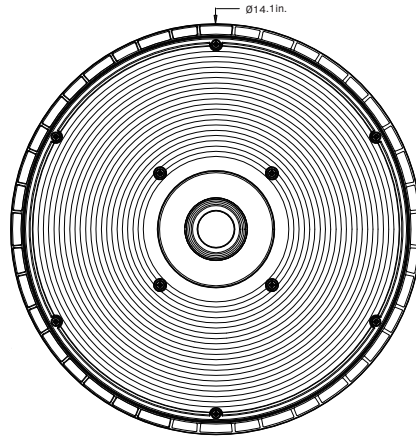
Dimensions & Weight

60W | 80W | 90W | 100W | 120W | 150W



Weight: 3.68lb.

138W | 184W | 210W | 230W



Weight: 6.53lb.

Mounting Options



HOOK MOUNT

Included hook mount features an anti-shedding screw for added security.



PENDANT MOUNT

A 3/4" conduit entry point ensures easy pendant installation.



ADJUSTABLE SURFACE MOUNTING BRACKET

Allows precise aiming of the fixture to 0°, 30°, 60°, 90°, 120°, 150°, or 180°.

Accessories



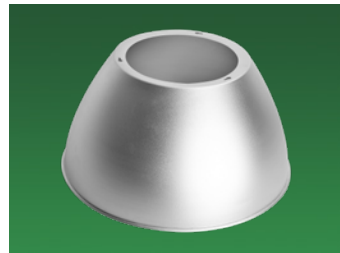
MULTI-LEVEL MOTION SENSOR

Center-mounted plug & play multi-level motion sensor detects occupancy in an area for additional energy savings.



EMERGENCY BATTERY BACKUP

Emergency battery backup provides up to 90 minutes of operation during power outages.

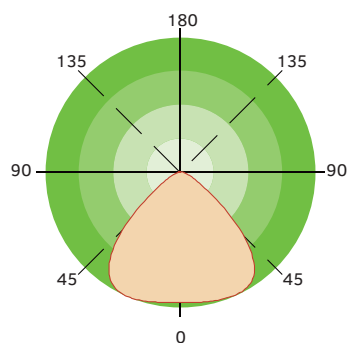


ALUMINUM REFLECTOR

Optional aluminum reflector provides a more focused light distribution.

Light Distribution

General High Bay



Ordering Information

Circular High Bay Series GKOHBG8						Example: GKOHBG8210W27VDDKBM			
Fixture Type	Wattage	Voltage	CCT	Finish	Sensor (Optional)	Emergency Battery (Optional)	Adjustment Dial	Internal Code	
<input type="text"/>	<input type="text"/>	<input type="text"/>	<input type="text"/>	<input type="text"/>	<input type="text"/>	<input type="text"/>	<input type="text"/>	<input type="text"/>	
GKOHBG8	60W	27V 120-277V	DDK CCT Tunable	B Black D Dark Bronze W White	M With Sensor Blank Without Sensor	B With Emergency Battery Blank Without Emergency Battery	Blank Without Adjustment Dial	Blank Alphanumeric 2 With 2 CCTs	
	80W								
	90W								
	100W								
	120W								
	138W								
	150W								
	184W								
	210W								
	230W								