



LINEAR HIGH BAY

SINGLE WATTAGE SERIES GKOMLHG7



Product Overview

Compact, high-performing Series GKOMLHG7 Linear High Bays are an energy-efficient replacement for traditional T5 or T8 fixtures. Available options include a plug and play motion sensor and an external emergency battery backup.



Key Features

CONSTRUCTION:

- Rugged die-cast aluminum housing in a slim and modern design.

FINISH:

- The exterior is protected by a white rust-resistant powder coat finish that provides superior resistance to weathering and corrosion.

OPTICS:

- Light engines are available in selectable 4000K and 5000K configurations.
- A range of lumen options available from 12,100 to 60,600 lumens, replaces up to 22 F54T5 or 26 F32T8.
- Translucent prismatic lens precisely shapes the light output for uniform illumination with minimal glare.
- UGR: <28, as per the DLC 5.1 requirements.

ELECTRICAL:

- Standard 120-277V input voltage, optional 347-480V input voltage.
- Standard 6KV surge protection, meeting the industrial ANSI standards.
- 0-10V dimming driver(s) as default.
- THD: ≤20%, Power Factor: ≥90%.

CONTROLS:

- Optional plug & play multi-level motion sensor.
- Optional emergency battery backup provides up to 90 minutes of operation during outages.
- Bluetooth networked controls that are DLC NLC qualified, utilizing a Bluetooth SIG mesh network operated with iOS, Android, and web.

INSTALLATION:

- Chain mount with included steel mounting cable.
- Pendant mount with optional pendant hanger.
- Surface mount with optional surface mounting brackets.
- Optional wire guard protects lens against impact (by special order only).

WARRANTY:

- 5 Year Limited Warranty.

LISTINGS:

- DesignLights Consortium® (DLC) Premium.
- UL listed for damp locations.
- Rated for ambient operating temperature -40°F to 122°F (-40°C to 50°C).



100 E. Crossroads Pkwy. Ste. C
Bolingbrook, IL 60440
Phone: 630-793-9449
Web: www.gkoled.com

Performance Data

Lumen Output

System Watts	Voltage	CRI	4000K		5000K	
			Lumens	Efficacy	Lumens	Efficacy
78W	120-277V	80	12100lm	155m/W	12100lm	155m/W
96W	120-277V	80	15500lm	161lm/W	15500lm	161m/W
104W	120-277V	80	15200lm	146lm/W	15200lm	146m/W
123W	120-277V	80	19500lm	159lm/W	19500lm	159m/W
128W	120-277V	80	20000lm	156m/W	20000lm	156m/W
130W	120-277V	80	18500lm	142lm/W	18500lm	142m/W
150W	120-277V	80	24000lm	160lm/W	24000lm	160m/W
160W	120-277V	80	24100lm	151lm/W	24100lm	151m/W
164W	120-277V	80	25000lm	152lm/W	25000lm	152m/W
180W	120-277V	80	28000lm	156 lm/W	28000lm	156m/W
200W	120-277V	80	30200lm	151lm/W	30200lm	151m/W
205W	120-277V	80	30500lm	149lm/W	30500lm	149m/W
240W	120-277V	80	36000lm	150lm/W	36000lm	150m/W
246W	120-277V	80	38400lm	156lm/W	38400lm	156m/W
250W	120-277V	80	36100lm	144lm/W	36100lm	144m/W
300W	120-277V	80	42000lm	140lm/W	42000lm	140m/W
328W	120-277V	80	50000lm	152lm/W	50000lm	152m/W
410W	120-277V	80	60600lm	148 lm/W	60600lm	148m/W

Electrical Data

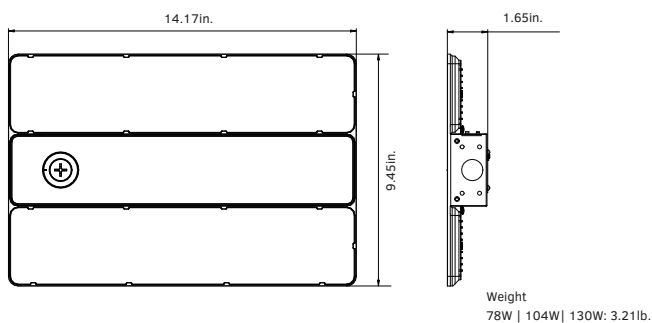
Number Of Drivers	Driver Current (mA)	Nominal Power (W)	Input Voltage (V)	Current (Amps)
1	360	78	120	0.65
		78	208	0.38
		78	240	0.33
		78	277	0.28
		78	347	0.22
		78	480	0.16
1	450	96	120	0.80
		96	208	0.46
		96	240	0.40
		96	277	0.35
		96	347	0.28
		96	480	0.20
1	480	104	120	0.87
		104	208	0.50
		104	240	0.43
		104	277	0.38
		104	347	0.30
		104	480	0.22
1	600	123	120	1.03
		123	208	0.59
		123	240	0.51
		123	277	0.44
		123	347	0.35
		123	480	0.26

Number Of Drivers	Driver Current (mA)	Nominal Power (W)	Input Voltage (V)	Current (Amps)
1	600	128	120	1.07
		128	208	0.62
		128	240	0.53
		128	277	0.46
		128	347	0.37
		128	480	0.27
1	600	130	120	1.08
		130	208	0.63
		130	240	0.54
		130	277	0.47
		130	347	0.37
		130	480	0.27
1	720	150	120	1.25
		150	208	0.72
		150	240	0.63
		150	277	0.54
		150	347	0.43
		150	480	0.31
1	750	160	120	1.33
		160	208	0.77
		160	240	0.67
		160	277	0.58
		160	347	0.46
		160	480	0.33
1	800	164	120	1.37
		164	208	0.79
		164	240	0.68
		164	277	0.59
		164	347	0.47
		164	480	0.34
1	888	180	120	1.50
		180	208	0.87
		180	240	0.75
		180	277	0.65
		180	347	0.52
		180	480	0.38
1	960	200	120	1.67
		200	208	0.96
		200	240	0.83
		200	277	0.72
		200	347	0.58
		200	480	0.42
1	1000	205	120	1.71
		205	208	0.99
		205	240	0.85
		205	277	0.74
		205	347	0.59
		205	480	0.43
1	1184	240	120	2.00
		240	208	1.15
		240	240	1.00
		240	277	0.87
		240	347	0.69
		240	480	0.50
2	600	246	120	2.05
		246	208	1.18
		246	240	1.03
		246	277	0.89
		246	347	0.71
		246	480	0.51
1	1200	250	120	2.08
		250	208	1.20
		250	240	1.04
		250	277	0.90
		250	347	0.72
		250	480	0.52

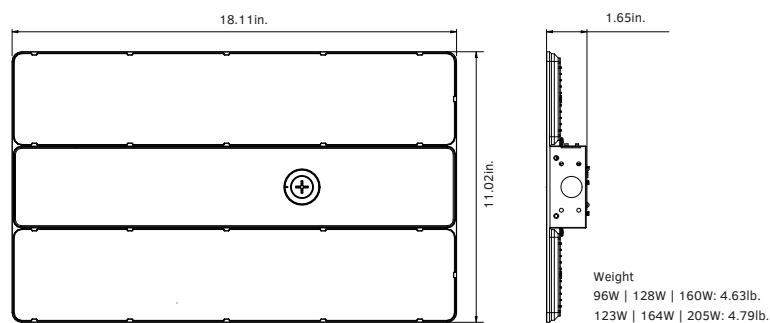
Number Of Drivers	Driver Current (mA)	Nominal Power (W)	Input Voltage (V)	Current (Amps)
1	1480	300	120	2.50
		300	208	1.44
		300	240	1.25
		300	277	1.08
		300	347	0.86
		300	480	0.63
2	800	328	120	2.73
		328	208	1.58
		328	240	1.37
		328	277	1.18
		328	347	0.95
		328	480	0.68
2	1000	410	120	3.42
		410	208	1.97
		410	240	1.71
		410	277	1.48
		410	347	1.18
		410	480	0.85

Dimensions & Weight

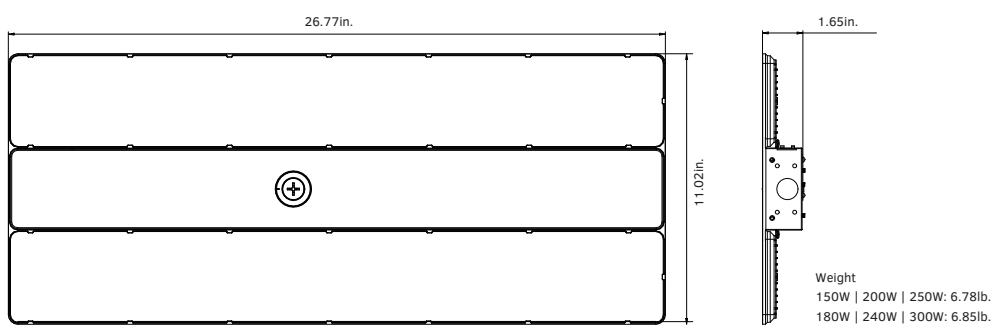
78W | 104W | 130W



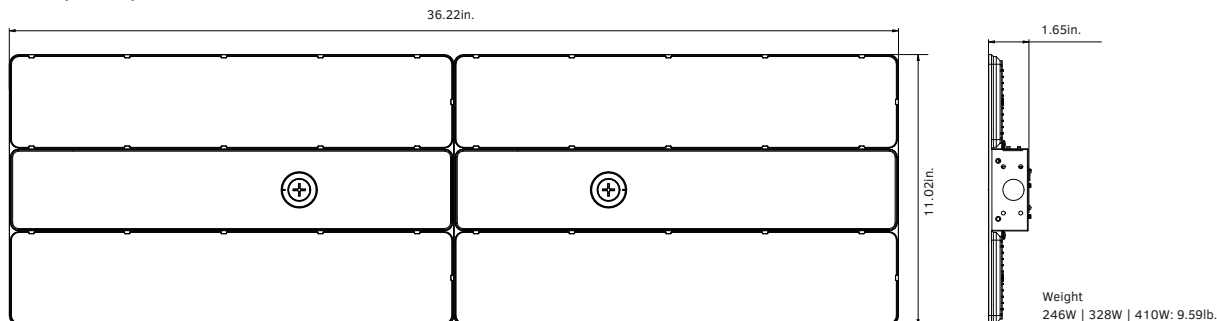
96W | 123W | 128W | 160W | 164W | 205W



150W | 180W | 200W | 240W | 250W | 300W



246W | 328W | 410W



100 E. Crossroads Pkwy. Ste. C
Bolingbrook, IL 60440
Phone: 630-793-9449
Web: www.gkoled.com

Accessories



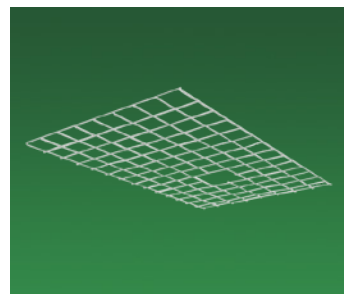
MULTI-LEVEL MOTION SENSOR

Optional plug & play multi-level motion sensor detects occupancy in an area for additional energy savings.



EMERGENCY BATTERY BACKUP

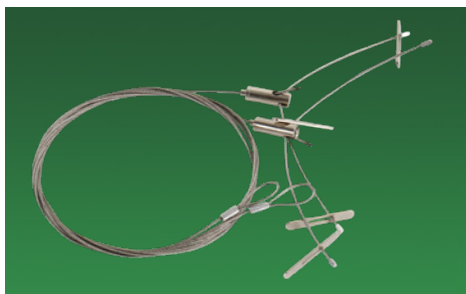
Optional emergency battery backup provides up to 90 minutes of operation during power outages.



WIRE GUARD

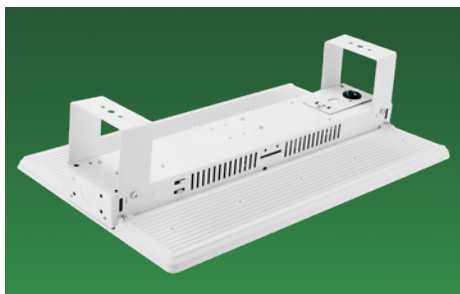
A special order wire guard protects the fixture lens against impact.

Mounting Options



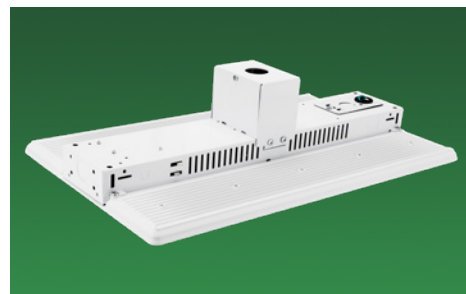
CHAIN MOUNTING

A heavy-duty steel cable is included with every fixture to accommodate chain mounting.



SURFACE MOUNTING

A set of optional surface mounting brackets allow the fixture to be directly mounted to the ceiling.

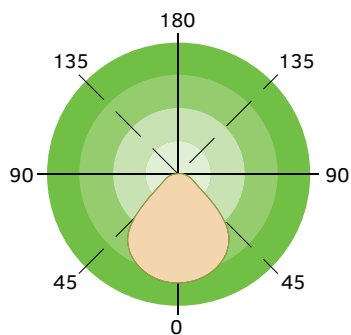


CONDUIT PENDANT MOUNTING

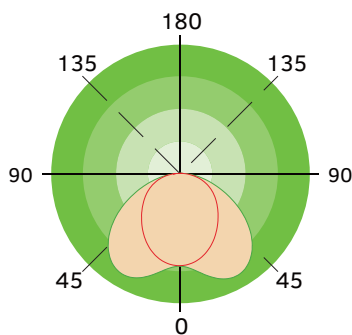
An optional pendant hanger box includes everything necessary for pendant mounting the fixture using a standard 3/4" conduit (conduit not included).

Light Distribution

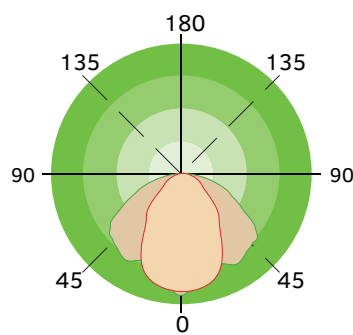
General



Aisle



Narrow



Ordering Information

Linear High Bay Series GKOMLHG7								Example: GKOMLHG7130W27VDDKPD						
Fixture Type <div></div>	Wattage <div></div>	Voltage <div></div>		CCT <div></div>		Finish <div></div>		Lens <div></div>		Sensor (Option) <div></div>		Emergency Battery (Option) <div></div>		Internal Code <div></div>
GKOMLHG7	78W	27V	120-277V	DDK	CCT Adjustable	W	White	PD	Prismatic Lens	M	With 120-277V Sensor	B	With Battery	Blank
	96W	48V	347-480V					AL	Aisle Lens	Blank	Without Sensor	Blank	Without Battery	Alphanumeric
	104W							ND	Narrow Lens					
	123W													
	128W													
	130W													
	150W													
	160W													
	164W													
	180W													
	200W													
	205W													
	240W													
	246W													
	250W													
	300W													
	328W													
410W														