



Product Overview

Compact, high-performing Series GKOMLHG7 Linear High Bays are an energy-efficient replacement for traditional T5 or T8 fixtures. Power & CCT adjustment controls are standard on every model, allowing the lighting professional to adjust light output in the field.



Key Features

CONSTRUCTION:

- Rugged die-cast aluminum housing in a slim and modern design.

FINISH:

- The exterior is protected by a white rust-resistant powder coat finish that provides superior resistance to weathering and corrosion.

OPTICS:

- Light engines are available in selectable 4000K and 5000K configurations.
- A range of lumen options available from 8,200 to 60,600 lumens, replaces up to 22 F54T5 or 26 F32T8.
- Translucent prismatic lens precisely shapes the light output for uniform illumination with minimal glare.
- UGR: <28, as per the DLC 5.1 requirements.

ELECTRICAL:

- Standard 120-277V input voltage, optional 347-480V input voltage.
- Standard 6KV surge protection, meeting the industrial ANSI standards.
- 0-10V dimming driver(s) as default.
- THD: ≤20%, Power Factor: ≥90%.

CONTROLS:

- Power & CCT adjustment controls standard, enabling power adjustment to 100%, 80%, 60%, or 40%, and CCT adjustment to 4000K or 5000K.
- Optional plug & play multi-level motion sensor.
- Optional emergency battery backup provides up to 90 minutes of operation during outages.
- Bluetooth networked controls that are DLC NLC qualified, utilizing a Bluetooth SIG mesh network operated with iOS, Android, and web.

INSTALLATION:

- Chain mount with included steel mounting cable.
- Pendant mount with optional pendant hanger.
- Surface mount with optional surface mounting brackets.
- Optional wire guard protects lens against impact (by special order only).

WARRANTY:

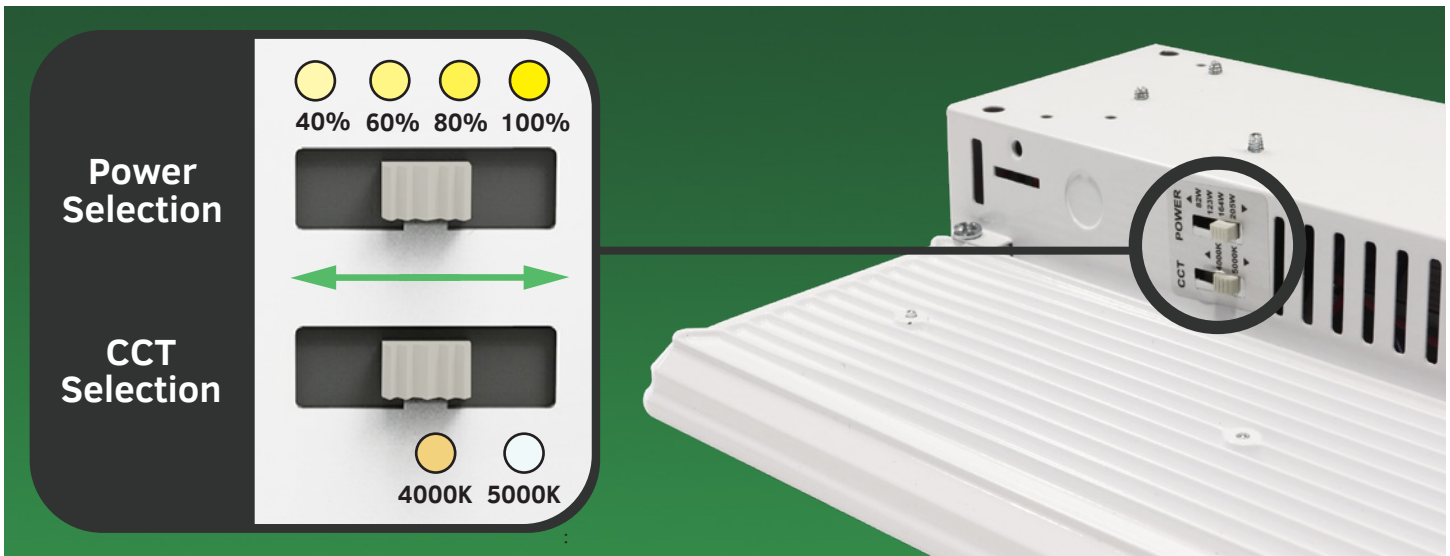
- 5 Year Limited Warranty.

LISTINGS:

- DesignLights Consortium® (DLC) Premium.
- UL listed for damp locations.
- Rated for ambient operating temperature -40°F to 122°F (-40°C to 50°C).

Power & CCT Adjustment Controls

Standard On All Models



Performance Data

Lumen Output

130W						
Setting	System Watts	CRI	4000K		5000K	
			Lumens	Efficacy	Lumens	Efficacy
100%	130W	80	18500lm	142lm/W	18500lm	142lm/W
80%	104W	80	15200lm	146lm/W	15200lm	146lm/W
60%	78W	80	12100lm	155lm/W	12100lm	155lm/W
40%	52W	80	8200lm	158lm/W	8200lm	158lm/W

160W						
Setting	System Watts	CRI	4000K		5000K	
			Lumens	Efficacy	Lumens	Efficacy
100%	160W	80	24100lm	151lm/W	24100lm	151lm/W
80%	128W	80	20000lm	156lm/W	20000lm	156lm/W
60%	96W	80	15500lm	161lm/W	15500lm	161lm/W
40%	64W	80	10600lm	166lm/W	10600lm	166lm/W

205W						
Setting	System Watts	CRI	4000K		5000K	
			Lumens	Efficacy	Lumens	Efficacy
100%	205W	80	30500lm	149lm/W	30500lm	149lm/W
80%	164W	80	25000lm	152lm/W	25000lm	152lm/W
60%	123W	80	19500lm	159lm/W	19500lm	159lm/W
40%	82W	80	14000lm	171lm/W	14000lm	171lm/W

250W						
Setting	System Watts	CRI	4000K		5000K	
			Lumens	Efficacy	Lumens	Efficacy
100%	250W	80	36100lm	144lm/W	36100lm	144lm/W
80%	200W	80	30200lm	151lm/W	30200lm	151lm/W
60%	150W	80	24000lm	160lm/W	24000lm	160lm/W
40%	100W	80	16400lm	164lm/W	16400lm	164lm/W

300W						
Setting	System Watts	CRI	4000K		5000K	
			Lumens	Efficacy	Lumens	Efficacy
100%	300W	80	42000lm	140lm/W	42000lm	140lm/W
80%	240W	80	36000lm	150lm/W	36000lm	150lm/W
60%	180W	80	28000lm	156lm/W	28000lm	156lm/W
40%	120W	80	20000lm	167lm/W	20000lm	167lm/W

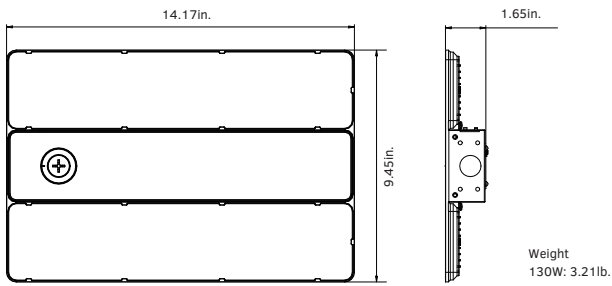
410W						
Setting	System Watts	CRI	4000K		5000K	
			Lumens	Efficacy	Lumens	Efficacy
100%	410W	80	60600lm	148lm/W	60600lm	148lm/W
80%	328W	80	50000lm	152lm/W	50000lm	152lm/W
60%	246W	80	38400lm	156lm/W	38400lm	156lm/W
40%	164W	80	28000lm	171lm/W	28000lm	171lm/W

Electrical Data

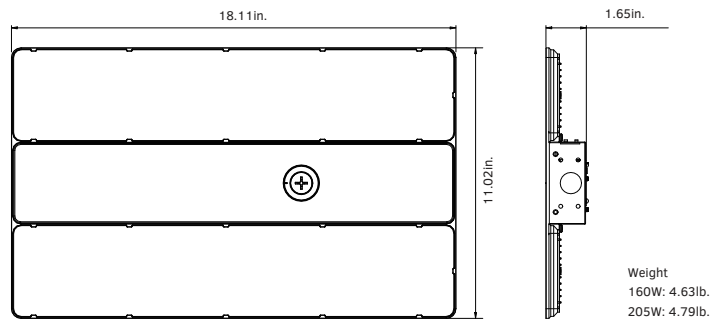
Number Of Drivers	Driver Current (mA)	Nominal Power (W)	Input Voltage (V)	Current (Amps)
1	600	130	120	1.08
		130	208	0.63
		130	240	0.54
		130	277	0.47
		130	347	0.37
		130	480	0.27
1	750	160	120	1.33
		160	208	0.77
		160	240	0.67
		160	277	0.58
		160	347	0.46
		160	480	0.33
1	1000	205	120	1.71
		205	208	0.99
		205	240	0.85
		205	277	0.74
		205	347	0.59
		205	480	0.43
1	1200	250	120	2.08
		250	208	1.20
		250	240	1.04
		250	277	0.90
		250	347	0.72
		250	480	0.52
1	1480	300	120	2.50
		300	208	1.44
		300	240	1.25
		300	277	1.08
		300	347	0.86
		300	480	0.63
2	100	410	120	3.42
		410	208	1.97
		410	240	1.71
		410	277	1.48
		410	347	1.18
		410	480	0.85

Dimensions & Weight

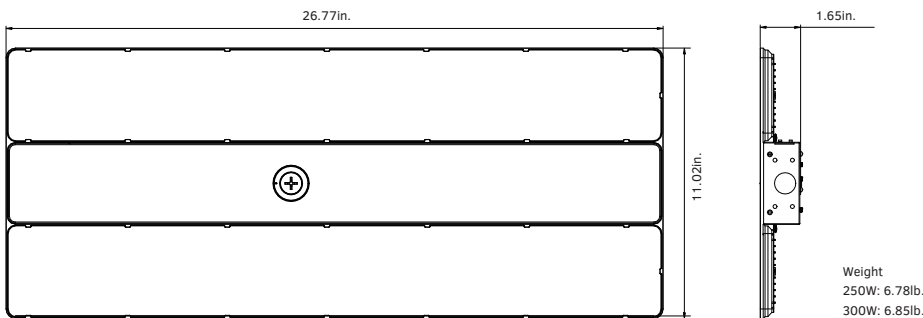
130W



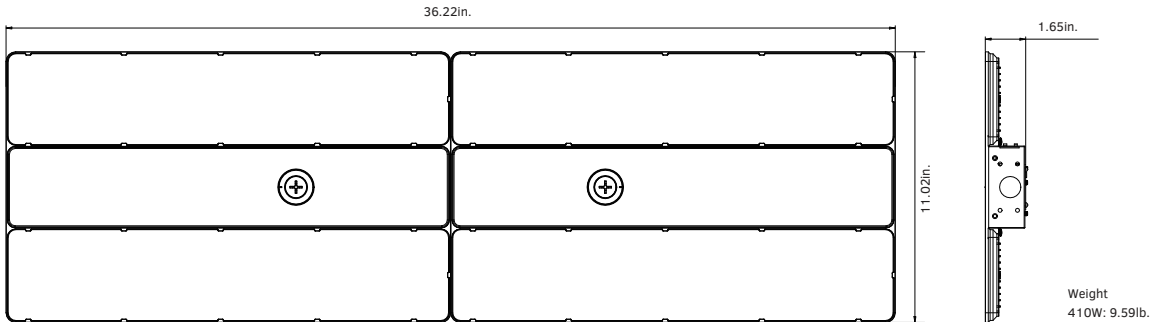
160W / 205W



250W / 300W



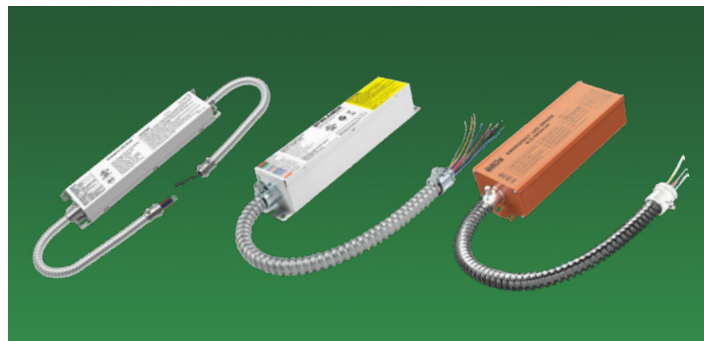
410W



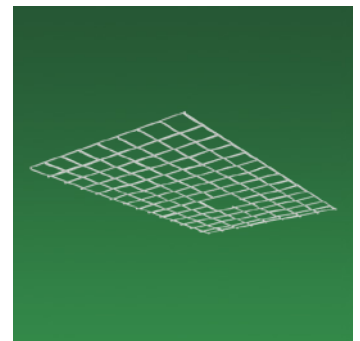
Accessories



MULTI-LEVEL MOTION SENSOR
Plug & play multi-level motion sensor detects occupancy in an area for additional energy savings.

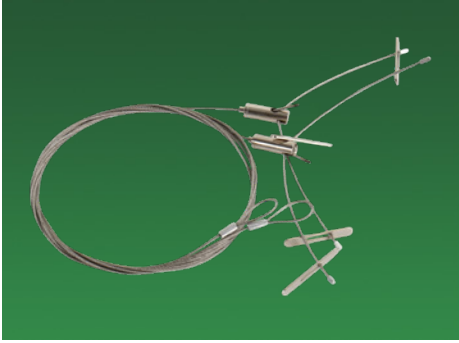


EMERGENCY BATTERY BACKUP
Special order emergency battery backup provides up to 90 minutes of operation during power outages.



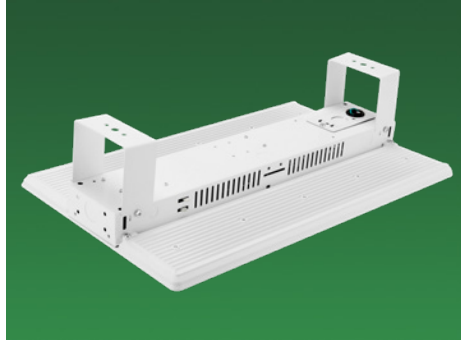
WIRE GUARD
A special order wire guard protects the fixture lens against impact.

Mounting Options



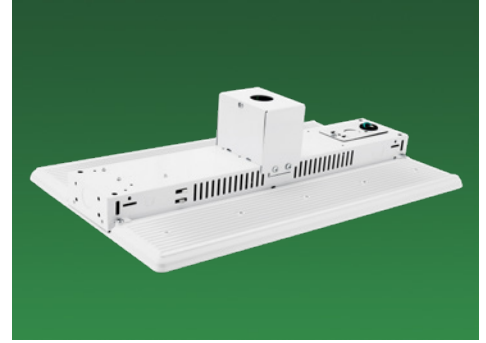
CHAIN MOUNTING

A heavy-duty steel cable is included with every fixture to accommodate chain mounting.



SURFACE MOUNTING

A set of optional surface mounting brackets allow the fixture to be directly mounted to the ceiling.

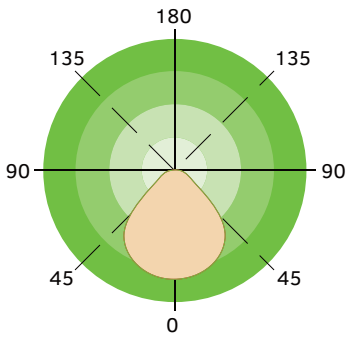


CONDUIT PENDANT MOUNTING

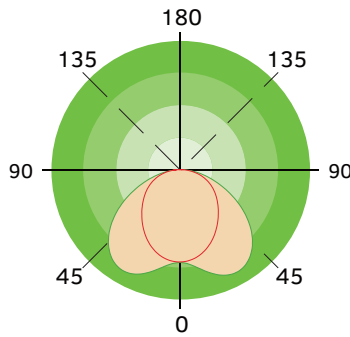
An optional pendant hanger box includes everything necessary for pendant mounting the fixture using a standard 3/4" conduit (conduit not included).

Light Distribution

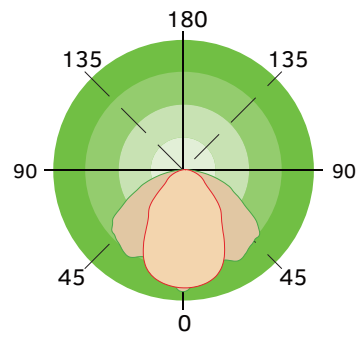
General



Aisle



Narrow



Ordering Information

Linear High Bay Series GKOMLHG7

Example: GKOMLHG7130W27VDDKPD

Fixture Type	Wattage	Voltage	CCT	Finish	Lens	Sensor (Option)	Emergency Battery (Option)	Internal Code
<input type="text"/>	<input type="text"/>	<input type="text"/>	<input type="text"/>	<input type="text"/>	<input type="text"/>	<input type="text"/>	<input type="text"/>	<input type="text"/>
GKOMLHG7	130W 160W 205W 260W 300W 410W	27V 120-277V 48V 347-480V	DDK Power & CCT Adjustable	W White	PD Prismatic Lens AL Aisle Lens ND Narrow Lens	M With 120-277V Sensor Blank Without Sensor	B With Battery Blank Without Battery	Blank Alphanumeric