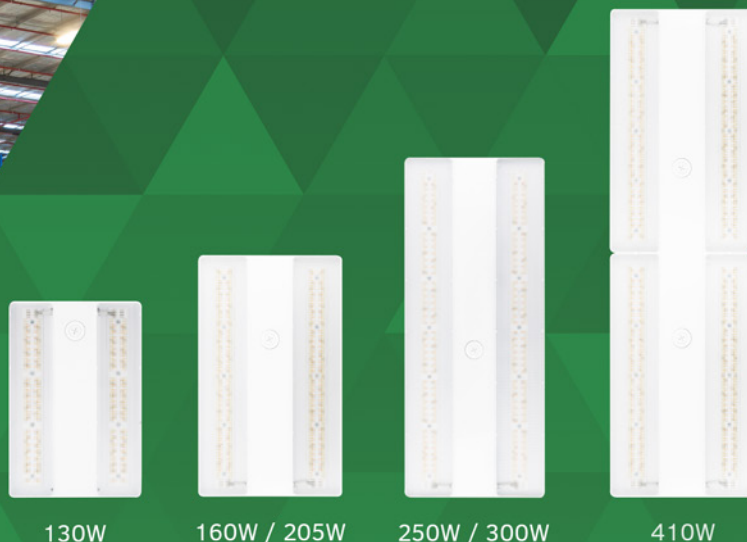




# POWER & CCT TUNABLE SERIES GKOMLHG7

## LINEAR HIGH BAY



## Product Overview

Compact, high-performing Series GKOMLHG7 Linear High Bays are an energy-efficient replacement for traditional T5 or T8 fixtures. Power & CCT adjustment controls are standard on every model, allowing the lighting professional to adjust light output in the field.



## Key Features

### CONSTRUCTION:

- Rugged die-cast aluminum housing in a slim and modern design.

### FINISH:

- The exterior is protected by a white rust-resistant powder coat finish that provides superior resistance to weathering and corrosion.

### OPTICS:

- Light engines are available in selectable 4000K and 5000K configurations.
- A range of lumen options available from 8,200 to 60,600 lumens, replaces up to 22 F54T5 or 26 F32T8.
- Translucent prismatic lens precisely shapes the light output for uniform illumination with minimal glare.
- UGR: <28, as per the DLC 5.1 requirements.

### ELECTRICAL:

- Standard 120-277V input voltage, optional 347-480V input voltage.
- Standard 6KV surge protection, meeting the industrial ANSI standards.
- 0-10V dimming driver(s) as default.
- THD: ≤20%, Power Factor: ≥90%.

### CONTROLS:

- Power & CCT adjustment controls standard, enabling power adjustment to 100%, 80%, 60%, or 40%, and CCT adjustment to 4000K or 5000K.
- Optional plug & play multi-level motion sensor.
- Optional emergency battery backup provides up to 90 minutes of operation during outages.
- Bluetooth networked controls that are DLC NLC qualified, utilizing a Bluetooth SIG mesh network operated with iOS, Android, and web.

### INSTALLATION:

- Chain mount with included steel mounting cable.
- Pendant mount with optional pendant hanger.
- Surface mount with optional surface mounting brackets.
- Optional wire guard protects lens against impact (by special order only).

### WARRANTY:

- 5 Year Limited Warranty.

### LISTINGS:

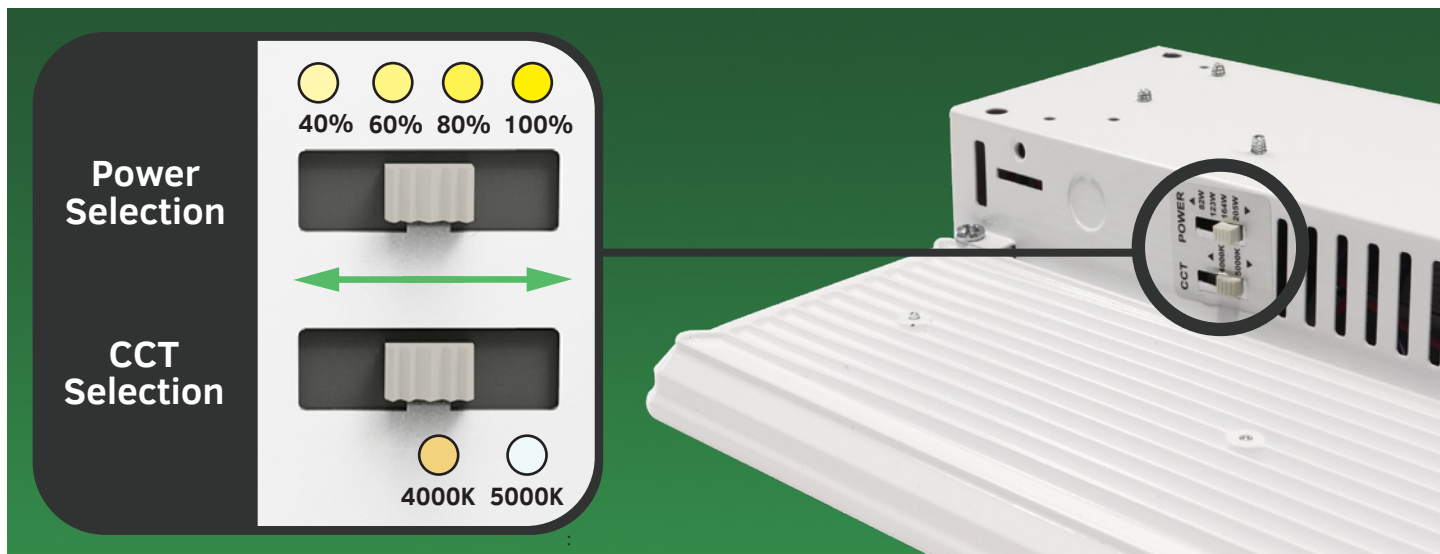
- DesignLights Consortium® (DLC) Premium.
- UL listed for damp locations.
- Rated for ambient operating temperature -40°F to 122°F (-40°C to 50°C).



100 E. Crossroads Pkwy. Ste. C  
Bolingbrook, IL 60440  
Phone: 630-793-9449  
Web: [www.gkoled.com](http://www.gkoled.com)

# Power & CCT Adjustment Controls

Standard On All Models



## Performance Data

### Lumen Output

130W						
Setting	System Watts	CRI	4000K		5000K	
			Lumens	Efficacy	Lumens	Efficacy
100%	130W	80	18500lm	142lm/W	18500lm	142lm/W
80%	104W	80	15200lm	146lm/W	15200lm	146lm/W
60%	78W	80	12100lm	155lm/W	12100lm	155lm/W
40%	52W	80	8200lm	158lm/W	8200lm	158lm/W

160W						
Setting	System Watts	CRI	4000K		5000K	
			Lumens	Efficacy	Lumens	Efficacy
100%	160W	80	24100lm	151lm/W	24100lm	151lm/W
80%	128W	80	20000lm	156lm/W	20000lm	156lm/W
60%	96W	80	15500lm	161lm/W	15500lm	161lm/W
40%	64W	80	10600lm	166lm/W	10600lm	166lm/W

205W						
Setting	System Watts	CRI	4000K		5000K	
			Lumens	Efficacy	Lumens	Efficacy
100%	205W	80	30500lm	149lm/W	30500lm	149lm/W
80%	164W	80	25000lm	152lm/W	25000lm	152lm/W
60%	123W	80	19500lm	159lm/W	19500lm	159lm/W
40%	82W	80	14000lm	171lm/W	14000lm	171lm/W

250W						
Setting	System Watts	CRI	4000K		5000K	
			Lumens	Efficacy	Lumens	Efficacy
100%	250W	80	36100lm	144lm/W	36100lm	144lm/W
80%	200W	80	30200lm	151lm/W	30200lm	151lm/W
60%	150W	80	24000lm	160lm/W	24000lm	160lm/W
40%	100W	80	16400lm	164lm/W	16400lm	164lm/W

300W						
Setting	System Watts	CRI	4000K		5000K	
			Lumens	Efficacy	Lumens	Efficacy
100%	300W	80	42000lm	140lm/W	42000lm	140lm/W
80%	240W	80	36000lm	150lm/W	36000lm	150lm/W
60%	180W	80	28000lm	156lm/W	28000lm	156lm/W
40%	120W	80	20000lm	167lm/W	20000lm	167lm/W

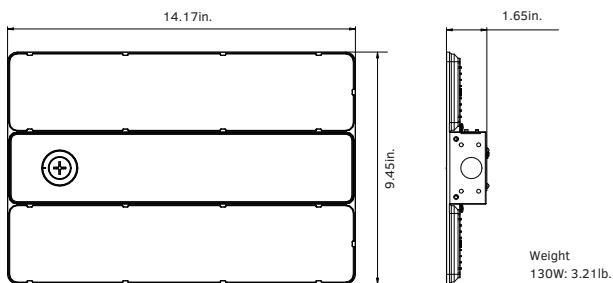
410W						
Setting	System Watts	CRI	4000K		5000K	
			Lumens	Efficacy	Lumens	Efficacy
100%	410W	80	60600lm	148lm/W	60600lm	148lm/W
80%	328W	80	50000lm	152lm/W	50000lm	152lm/W
60%	246W	80	38400lm	156lm/W	38400lm	156lm/W
40%	164W	80	28000lm	171lm/W	28000lm	171lm/W

## Electrical Data

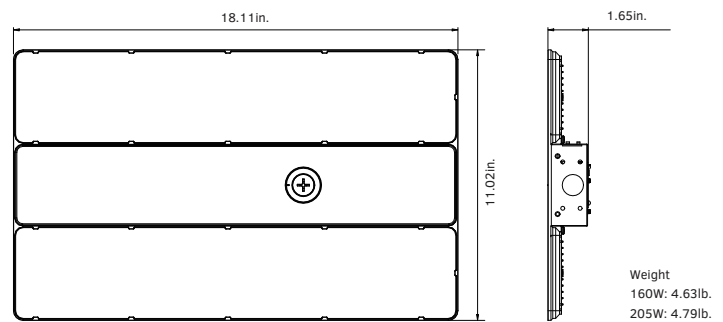
Number Of Drivers	Driver Current (mA)	Nominal Power (W)	Input Voltage (V)	Current (Amps)
1	600	130	120	1.08
		130	208	0.63
		130	240	0.54
		130	277	0.47
		130	347	0.37
		130	480	0.27
1	750	160	120	1.33
		160	208	0.77
		160	240	0.67
		160	277	0.58
		160	347	0.46
		160	480	0.33
1	1000	205	120	1.71
		205	208	0.99
		205	240	0.85
		205	277	0.74
		205	347	0.59
		205	480	0.43
1	1200	250	120	2.08
		250	208	1.20
		250	240	1.04
		250	277	0.90
		250	347	0.72
		250	480	0.52
1	1480	300	120	2.50
		300	208	1.44
		300	240	1.25
		300	277	1.08
		300	347	0.86
		300	480	0.63
2	100	410	120	3.42
		410	208	1.97
		410	240	1.71
		410	277	1.48
		410	347	1.18
		410	480	0.85

# Dimensions & Weight

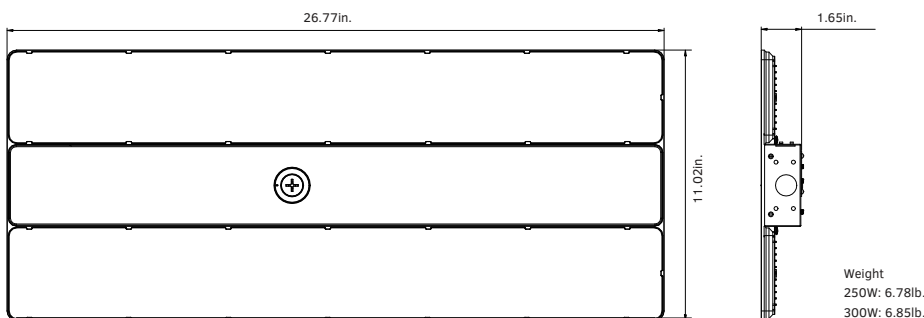
## 130W



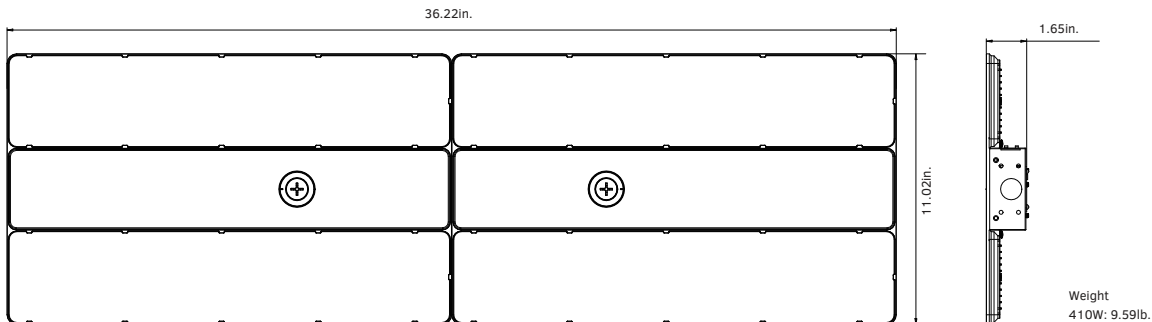
## 160W / 205W



## 250W / 300W



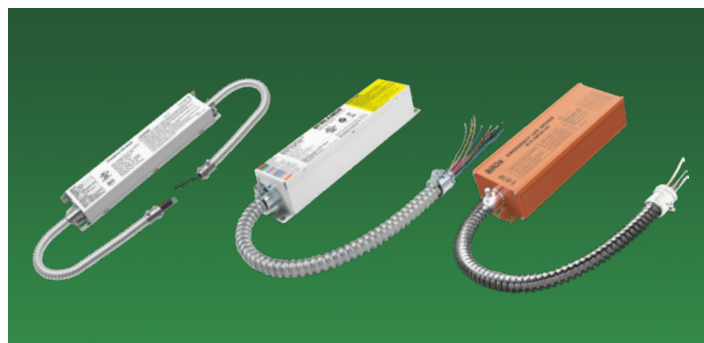
## 410W



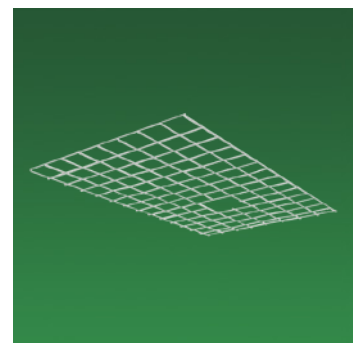
# Accessories



**MULTI-LEVEL MOTION SENSOR**  
Plug & play multi-level motion sensor detects occupancy in an area for additional energy savings.

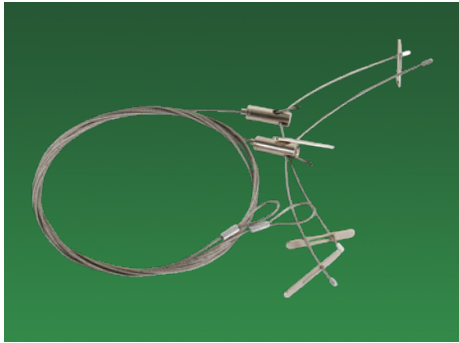


**EMERGENCY BATTERY BACKUP**  
Special order emergency battery backup provides up to 90 minutes of operation during power outages.



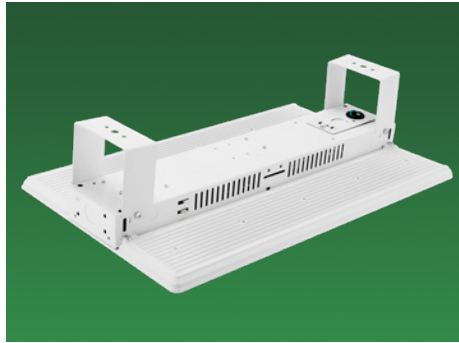
**WIRE GUARD**  
A special order wire guard protects the fixture lens against impact.

## Mounting Options



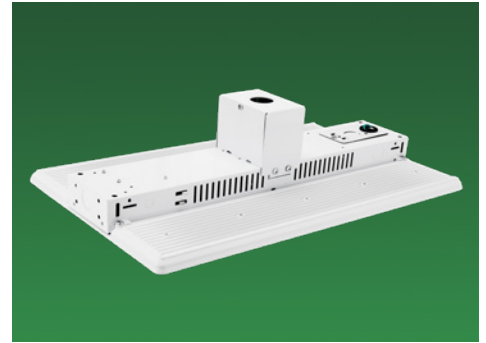
## CHAIN MOUNTING

A heavy-duty steel cable is included with every fixture to accommodate chain mounting.



## SURFACE MOUNTING

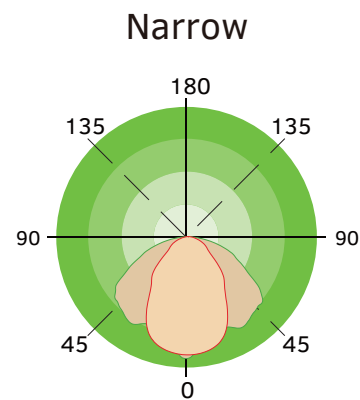
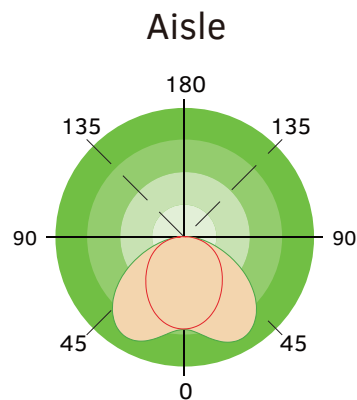
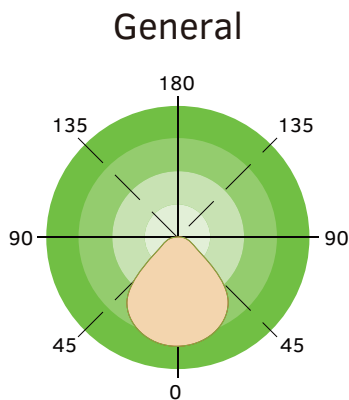
A set of optional surface mounting brackets allow the fixture to be directly mounted to the ceiling.



## CONDUIT PENDANT MOUNTING

An optional pendant hanger box includes everything necessary for pendant mounting the fixture using a standard 3/4" conduit (conduit not included).

## Light Distribution



## Ordering Information

Linear High Bay Series GKOMLHG7												Example: GKOMLHG7130W27VDDKPD											
Fixture Type	Wattage		Voltage		CCT		Finish		Lens		Sensor (Option)		Emergency Battery (Option)		Internal Code								
<div></div>	<div></div>		<div></div>		<div></div>		<div></div>		<div></div>		<div></div>		<div></div>		<div></div>								
GKOMLHG7	130W	27V	120-277V		DDK	Power & CCT Adjustable		W	White		PD	Prismatic Lens		M	With 120-277V Sensor		B	With Battery		Blank			
	160W	48V	347-480V								AL	Aisle Lens		Blank	Without Sensor		Blank	Without Battery			Alphanumeric		
	205W										ND	Narrow Lens											
	260W																						
	300W																						
	410W																						