



ARCHITECTURAL CYLINDER SERIES GKOARCHG2



Product Overview

Series GKOARCHG2 Power & CCT Selectable Architectural Cylinder Lights feature a modular design with a range of mounting, lens, and trim configurations. Choose from 3 power options and 5 CCT options with switches accessed on the top of the fixture, and customize the beam angle from 18° to 50°.

Key Features

CONSTRUCTION:

- Die-cast aluminum housing in a stylish cylinder design.
- Field-interchangeable parts for easy customized installations.

FINISH:

- Strong, durable black or white powder coat finish protects against wear and damage.
- Fixture may be disassembled for application of custom RAL finish.

OPTICS:

- Light engines are available in standard 2700K, 3000K, 3500K, 4000K and 5000K configurations in 90 CRI.
- A range of lumen options available from 800 to 4,000 Lumens.
- Impact and UV-resistant polycarbonate lens is precisely designed to give a specific light distribution, maximizing efficiency and application spacing.
- Continuously adjustable beam angle from 18° to 50°, with preset stops at 18°, 24°, 36°, and 50°.
- Included vortex baffle creates uniform, comfortable light output. Special order cross and wall wash baffles and softening, linear spread, and hex louver lenses offer a wide range of light distribution and design configurations.
- Low glare with UGR<13.

WARRANTY:

- 5 Year Limited Warranty.

ELECTRICAL:

- Universal 120-277VAC input voltage.
- Integrated 2.5KV surge protection.
- 0-10V dimming driver as default.
- THD: ≤20%, Power Factor: ≥90%.

CONTROLS:

- Power & CCT adjustment controls are standard, enabling power selection from 3 power options, and CCT selection from 2700K, 3000K, 3500K, 4000K or 5000K.

INSTALLATION:

- Optional surface mount for flush ceiling surface mounting.
- Optional adjustable surface mount for angled wall or ceiling surface mounting may be adjusted 0°- 355° horizontally and 0°- 90° vertically (not available for 6").
- Optional 7' or 12' cord mount for cord pendant mounting. Cord may be trimmed to custom length.
- Optional stem mount for stem pendant mounting protects the cord. Stems are available in 1' lengths and may be stacked up to 7'.

LISTINGS:

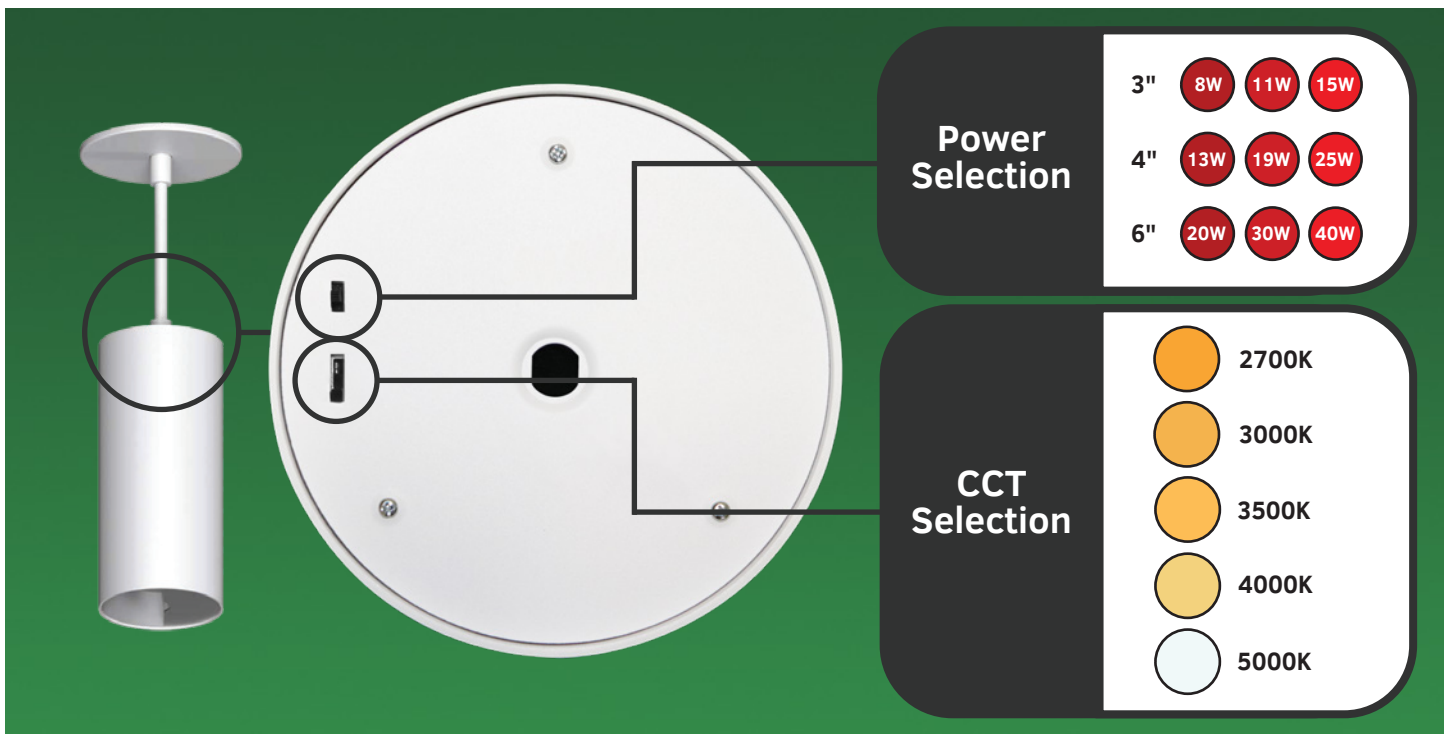
- UL certified for damp locations.
- Rated for ambient operating temperature -4°F to 104°F (-20°C to 40°C).



100 E. Crossroads Pkwy. Ste. C
Bolingbrook, IL 60440
Phone: 630-793-9449
Web: www.gkoled.com

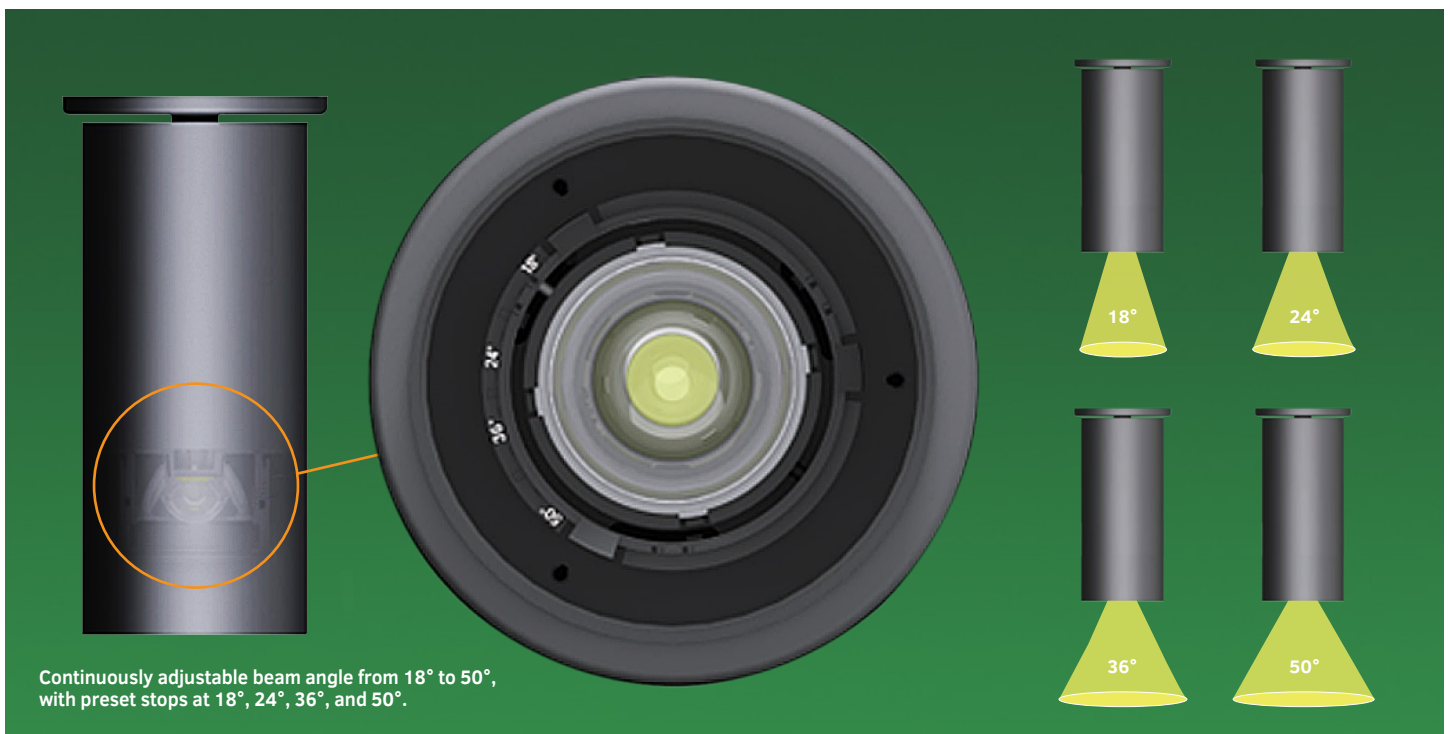
Power & CCT Adjustment Controls

Standard On All Models



Adjustable Beam Angle

Standard On All Models



Performance Data

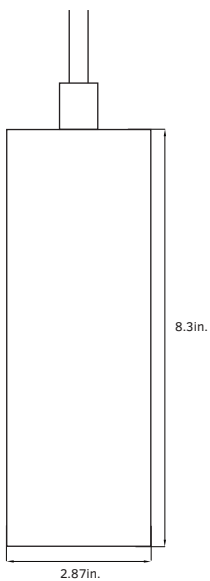
Size	Power Level	System Watts	2700K(90CRI)		3000K(90CRI)		3500K(90CRI)		4000K(90CRI)		5000K(90CRI)	
			Lumens	Efficacy	Lumens	Efficacy	Lumens	Efficacy	Lumens	Efficacy	Lumens	Efficacy
3"	Lv1	15W	1430lm	95lm/W	1430lm	95lm/W	1430lm	95lm/W	1500lm	100lm/W	1500lm	100lm/W
	Lv2	11W	1050lm	95lm/W	1050lm	95lm/W	1050lm	95lm/W	1100lm	100lm/W	1100lm	100lm/W
	Lv3	8W	760lm	95lm/W	760lm	95lm/W	760m	95lm/W	800lm	100lm/W	800lm	100lm/W
4"	Lv1	25W	2380lm	95lm/W	2380lm	95lm/W	2380lm	95lm/W	2500lm	100lm/W	2500lm	100lm/W
	Lv2	19W	1800lm	95lm/W	1800lm	95lm/W	1800lm	95lm/W	1900lm	100lm/W	1900lm	100lm/W
	Lv3	13W	1240lm	95lm/W	1240lm	95lm/W	1240lm	95lm/W	1300lm	100lm/W	1300lm	100lm/W
6"	Lv1	40W	3800lm	95lm/W	3800lm	95lm/W	3800lm	95lm/W	4000lm	100lm/W	4000lm	100lm/W
	Lv2	30W	2850lm	95lm/W	2850lm	95lm/W	2850lm	95lm/W	3000lm	100lm/W	3000lm	100lm/W
	Lv3	20W	1900lm	95lm/W	1900lm	95lm/W	1900lm	95lm/W	2000lm	100lm/W	2000lm	100lm/W

Electrical Data

Size	Number of Drivers	Driver Current (mA)	Power Level	Wattage	Current (A)			
					120V	208V	240V	277V
3"	1	390	Lv1	15W	0.13	0.07	0.06	0.05
			Lv1	11W	0.09	0.05	0.05	0.04
			Lv1	8W	0.07	0.04	0.03	0.03
4"	1	630	Lv1	25W	0.21	0.12	0.10	0.09
			Lv1	19W	0.16	0.09	0.08	0.07
			Lv1	13W	0.11	0.06	0.05	0.05
6"	1	980	Lv1	40W	0.33	0.19	0.17	0.14
			Lv1	30W	0.25	0.14	0.13	0.11
			Lv1	20W	0.17	0.10	0.08	0.07

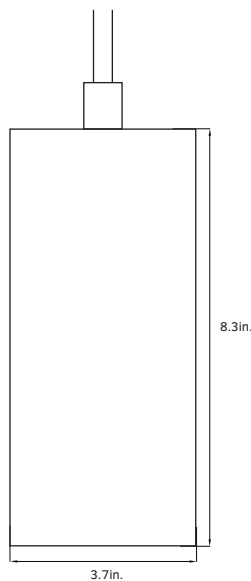
Dimensions

3"
8W/11W/15W



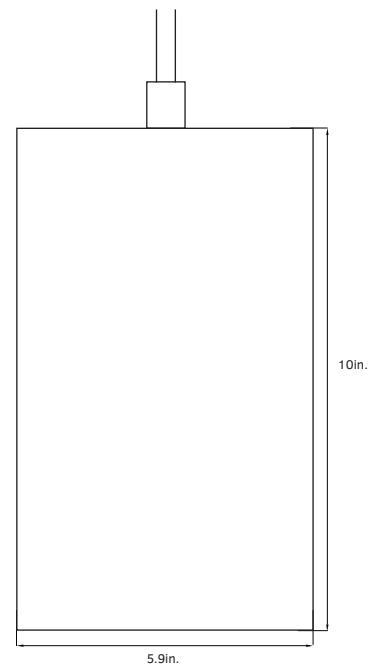
Weight:
3": 2.11lb.

4"
13W/19W/25W



Weight:
4": 2.53lb.

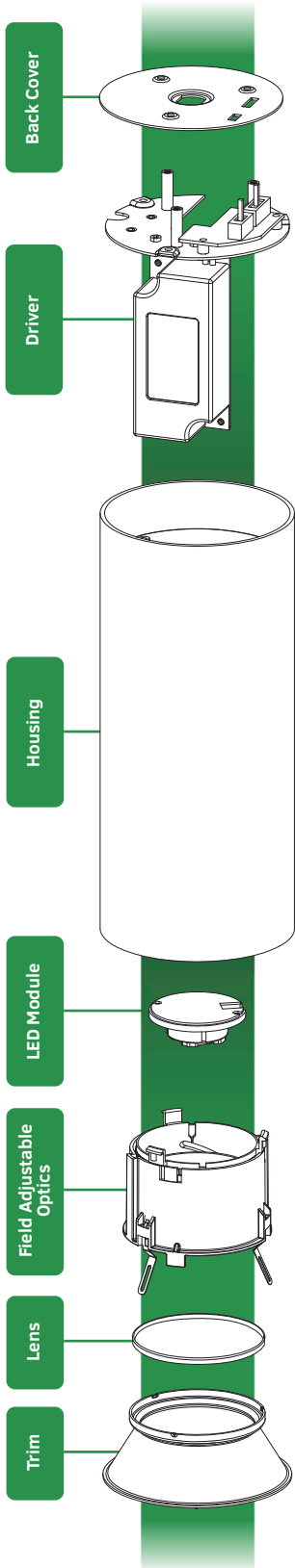
6"
20W/30W/40W



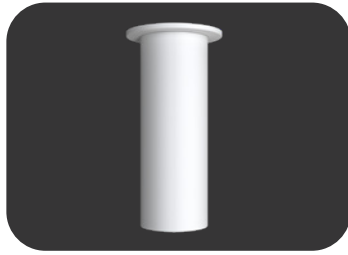
Weight:
6": 5.86lb.

Configurations

Modular design allows mix and matching of mounting, trim, and lens options.



Mounting Options



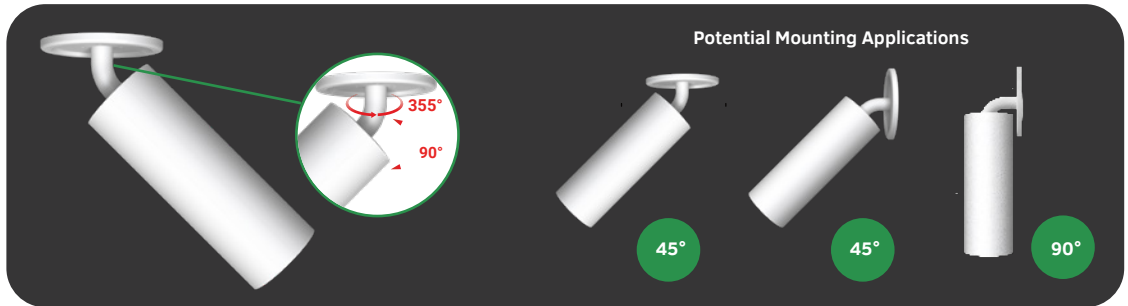
Surface Mount
Optional surface mount allows flush surface mounting to a ceiling.



7' or 12' Cord Pendant Mount
Optional 7' or 12' cord may be trimmed for custom length pendant mounting.



1' to 7' Stem Pendant Mount
Optional stackable stem for pendant mounting matches fixture finish.



Adjustable Surface Mount
Optional adjustable surface mount allows 355° horizontal rotation and 90° vertical rotation (not available for 6"). Potential mounting applications include 45° adjustable ceiling mounting, 45° adjustable wall mounting, and 90° adjustable wall mounting.

Lens Options (Sold Separately)



Softening
Special order lens creates a uniform, soft, and comfortable light output.



Linear Spread
Special order lens elongates the beam, changing the light to a rectangular spot.



Hex Louver
Special order lens creates focused lighting with reduced glare (UGR<9).

Trim Options



Vortex Baffle
Included trim creates a uniform, comfortable light output without any harsh shadows.



Cross Baffle
Special order trim creates a focused light output and reduces glare (in white only).



Wall Wash Baffle
Special order trim creates a soft and uniform wash of light on the wall (in 3" and 4" bright silver only).

Compatible Phase-Cut Dimmer List

Manufacturer	Product Model
Lutron	MACL-153M, LGCL-153PL, GLU12-F23622, GLV-600, DVLV-600P-MALV-600, NT-1000, SLV-600P, MA-600, DVCL-153P, 1K3502, DV-600P
Leviton	111506, 1B34L1, IPL06, SureSlide 6633, IPE04, IPL06-102, DVCL-153P
Legrand	LSLV603, RHCL453P

Ordering Information

Architectural Cylinder Light GKOARCHG2 Example: GKOARCHG2640W27VDDKYYYYYYY

Fixture Type	Size	Wattage	Voltage	CCT	Finish	CRI	Beam Angle	Lens (Optional)	Trim	Mounting	Internal Code
<input type="checkbox"/>	<input type="checkbox"/>	<input type="checkbox"/>	<input type="checkbox"/>	<input type="checkbox"/>	<input type="checkbox"/>	<input type="checkbox"/>	<input type="checkbox"/>	<input type="checkbox"/>	<input type="checkbox"/>	<input type="checkbox"/>	<input type="checkbox"/>
GKOARCHG2	3 3"	15W	27V 120-277V	DDK CCT Selectable	W White B Black	Y 90CRI	AT 18° - 50° Adjustable	Blank Without Lens S Softening Lens LS Linear Spread Lens HL Hex Louver Lens	VB Vortex Baffle CB Cross Baffle ¹ WB Wall Wash ² Baffle	SM Surface Mount	Blank Alphanumeric
	4 4"	25W								CM7 7' Cord Pendant Mount	
	6 6"	40W								CM12 12' Cord Pendant Mount STX 1' -7' Stem ³ Pendant Mount AS Adjustable Surface Mount ⁴ Blank	

- NOTE:** 1. Only available in white finish.
 2. Only available in bright silver for 3" and 4" sizes.
 3. X in SKU code represents desired length in feet of stem pendant mount, and should be a number from 1 to 7.
 4. Not available for 6" size.