

GKOLED®

CIRCULAR HIGH BAY

SINGLE WATTAGE

SERIES GKOHBG8



Product Overview

Series GKOHBG8 Circular High Bays feature a compact design with exceptional performance for energy-efficient commercial illumination. Options include plug & play motion sensors, Bluetooth Networked Controls, and emergency battery backups.



Key Features

CONSTRUCTION:

- Rugged die-cast aluminum housing with integral heat sink fins.
- Housing is completely sealed against moisture and environmental contaminants.

FINISH:

- The exterior is protected by a black rust-resistant polyester powder coat finish that provides superior resistance to weathering and corrosion.

OPTICS:

- Light engines are available in selectable 4000K and 5000K configurations.
- A range of lumen options available from 10,000 to 35,000 Lumens, replaces up to 400W metal halide.
- Impact and UV-resistant polycarbonate lens is precisely designed to give a specific light distribution, maximizing efficiency and application spacing.
- Optional aluminum reflector available for different beam angles.

ELECTRICAL:

- Standard 120-277V input voltage.
- Standard 6KV surge protection.
- 0-10V dimming driver(s) as default for a dimming range of 100% to 10%.
- THD: ≤20%, Power Factor: ≥90%.

WARRANTY:

- 5 Year Limited Warranty.

CONTROLS:

- Optional plug & play PIR motion sensor - ANT-6-4T (center-mounted, field-installed). Remote required to change default motion sensor settings.
- Optional motion sensor remote control - required for changing the motion sensor default settings, allows the user to program multiple sensors with ease and program the sensor after the fixture is installed.
- Optional emergency battery backup provides up to 90 minutes of operation during outages (factory-installed).
- Bluetooth NLC Listed PIR motion sensor, utilizing a Bluetooth SIG mesh network operated with iOS, Android, and web, optional for all models (field-installed).

INSTALLATION:

- 3/4" conduit pendant mount or hook mount options are available. Hook is included, conduit is not included. Optional conduit adaptor required for pendant mounting.
- Surface mounting with optional Adjustable Surface Mounting Bracket allows precise aiming of the fixture to 0°, 30°, 60°, 90°, 120°, 150°, or 180° (field-installed).

LISTINGS:

- DesignLights Consortium® (DLC) Premium qualified.
- UL Wet Location Listed.
- Rated for ambient operating temperature -40°F to 122°F (-40°C to 50°C).



100 E. Crossroads Pkwy. Ste. C
Bolingbrook, IL 60440
Phone: 630-793-9449
Web: www.gkoled.com

Performance Data

Lumen Output

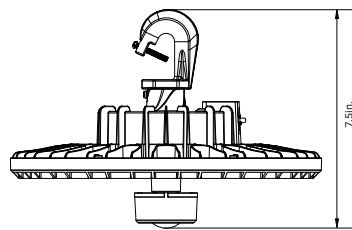
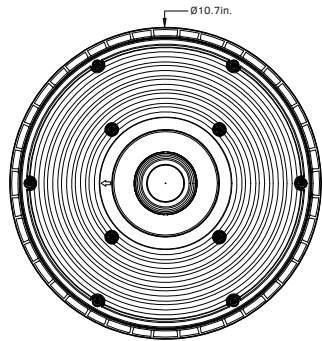
System Watts	Voltage	CRI	4000K		5000K	
			Lumens	Efficacy	Lumens	Efficacy
60W	120-277V	70	10000lm	167lm/W	10000lm	167m/W
80W	120-277V	70	13000lm	163lm/W	13000lm	163lm/W
90W	120-277V	70	15500m	172lm/W	14600lm	162m/W
100W	120-277V	76	14500lm	145lm/W	14500lm	145m/W
120W	120-277V	70	20000lm	167lm/W	19000lm	158m/W
138W	120-277V	70	24000lm	174lm/W	23000lm	167m/W
150W	120-277V	76	22500lm	150lm/W	22500lm	150m/W
184W	120-277V	70	30000lm	163lm/W	29000lm	158m/W
210W	120-277V	70	30000lm	143lm/W	30500lm	145m/W
230W	120-277V	76	35000lm	152 lm/W	35000lm	152m/W

Electrical Data

Number Of Drivers	Driver Current (mA)	Nominal Power (W)	Input Voltage (V)	Current (Amps)
1	480	60	120	0.50
		60	208	0.29
		60	240	0.25
		60	277	0.22
1	640	80	120	0.66
		80	208	0.38
		80	240	0.34
		80	277	0.29
1	690	90	120	0.75
		90	208	0.43
		90	240	0.38
		90	277	0.32
1	800	100	120	0.83
		100	208	0.48
		100	240	0.42
		100	277	0.36
1	920	120	120	1.00
		120	208	0.58
		120	240	0.50
		120	277	0.43
1	1050	138	120	1.15
		138	208	0.67
		138	240	0.58
		138	277	0.50
1	1150	150	120	1.25
		150	208	0.72
		150	240	0.63
		150	277	0.54
1	1400	184	120	1.54
		184	208	0.89
		184	240	0.77
		184	277	0.66
1	1700	210	120	1.75
		210	208	1.01
		210	240	0.88
		210	277	0.76
1	1750	230	120	1.92
		230	208	1.11
		230	240	0.96
		230	277	0.83

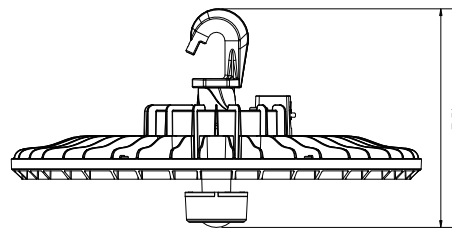
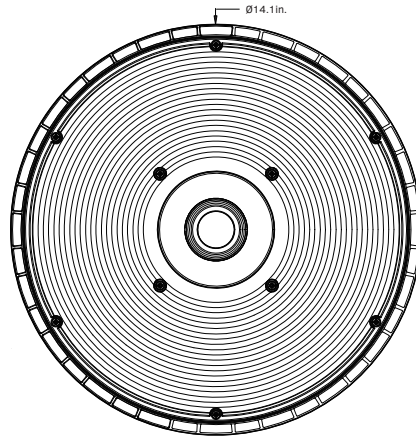
Dimensions & Weight

60W | 80W | 90W | 100W | 120W | 150W



Weight: 3.68lb.

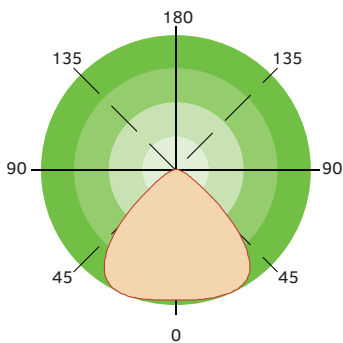
138W | 184W | 210W | 230W



Weight: 6.53lb.

Light Distribution

General High Bay



Mounting Options



HOOK MOUNT

Included hook mount features an anti-shedding screw for added security.



PENDANT MOUNT

A 3/4" conduit entry point ensures easy pendant installation. Conduit adaptor is required for pendant mounting (as shown below under Accessories).



ADJUSTABLE SURFACE MOUNTING BRACKET

Field-installed bracket allows precise aiming of the fixture to 0°, 30°, 60°, 90°, 120°, 150°, or 180°.

Accessories



PIR MOTION SENSOR

Optional field-installed, center-mounted plug & play PIR multi-level motion sensor detects occupancy in an area for additional energy savings. Remote required to change default motion sensor settings.



BLUETOOTH NLC LISTED PIR MOTION SENSOR

Optional field-installed, center-mounted plug & play Bluetooth PIR motion sensor adds Networked Control functionality utilizing a Bluetooth SIG mesh network operated with iOS, Android, and web.



MOTION SENSOR REMOTE CONTROL

Optional remote control is required to program the motion sensor with advanced lighting control options.



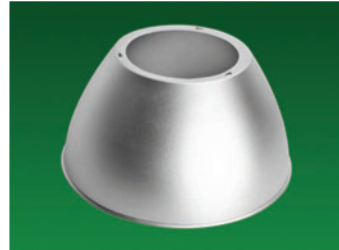
CONDUIT ADAPTOR

Optional adaptor allows conduit pendant mounting. The adaptor screws into the 3/4" hole on the top of the fixture and is used to guide the power and dimming cords into the conduit.



EMERGENCY BATTERY BACKUP

Optional factory-installed emergency battery backup provides up to 90 minutes of operation during power outages.



ALUMINUM REFLECTOR

Optional aluminum reflector provides a more focused light distribution.

Ordering Information

Circular High Bay Series GKOHBG8								Example: GKOHBG8210W27VDDKBM	
Fixture Type	Wattage	Voltage	CCT	Finish	Sensor (Optional)	Emergency Battery (Optional)	Adjustment Dial	Internal Code	
<input type="text"/>	<input type="text"/>	<input type="text"/>	<input type="text"/>	<input type="text"/>	<input type="text"/>	<input type="text"/>	<input type="text"/>	<input type="text"/>	
GKOHBG8	60W	27V 120-277V	DDK CCT Selectable	B Black	M With Sensor	B With Emergency Battery	Blank Without Adjustment Dial	Blank	
	80W			D Dark Bronze	Blank Without Sensor	Blank Without Emergency Battery		Alphanumeric	
	90W			W White				2 With 2 CCTs	
	100W								
	120W								
	138W								
	150W								
	184W								
	210W								
	230W								

NOTE: *Default finish is black. All other finishes are special order only.