



4FT: 40W
8FT: 70W

Product Overview

Power & CCT Selectable Series GKOLFG4 Linear Fixtures are an energy-efficient replacement for traditional T8, T5H0, or HID lights. Available in stocked 4ft and 8ft and special order 2ft configurations, they are ideal for lower ceiling heights.



Key Features

CONSTRUCTION:

- Rugged cold-rolled steel housing in a slim and modern design.
- Standard 2ft, 4ft, and 8ft sizes can be extended using row connectors.
- 8ft model features a default folding configuration for cost-effective shipping.

FINISH:

- The exterior is protected by a white rust-resistant powder coat finish that provides superior resistance to weathering and corrosion.

OPTICS:

- Light engines are available in 5 CCT selectable configurations.
 - 2FT: 2700K, 3000K, 3500K, 4000K, 5000K.
 - 4FT & 8FT: 3000K, 3500K, 4000K, 5000K, 6500K
- A range of lumen options available from 1,428 to 10,000 Lumens.
- <5 SDCM color consistency with 80CRI.
- Polycarbonate lens is precisely designed to give a specific light distribution, maximizing efficiency and application spacing.

ELECTRICAL:

- Universal 120-277V input voltage.
- Standard 6KV surge protection.
- 0-10V dimming driver(s) as default.
- THD: ≤20%, Power Factor: ≥90%.

WARRANTY:

- 5 Year Limited Warranty.

CONTROLS:

- Power & CCT adjustment controls are included, enabling power selection from 4 power levels and CCT selection from 5 CCT levels.
- Special order microwave motion sensor for additional energy savings - HD027VCR-2.
- Optional RC-100 motion sensor remote control - required for changing the motion sensor default settings, allows the user to program multiple sensors with ease and program the sensor after the fixture is installed.
- Optional emergency battery backup provides up to 90 minutes of operation during outages (factory-installed).
- Bluetooth NLC Listed plug & play PIR motion sensor, utilizing a Bluetooth SIG mesh network operated with iOS, Android, and web, optional for all models - ANT-1P-5T-BLE-SR (field-installed).

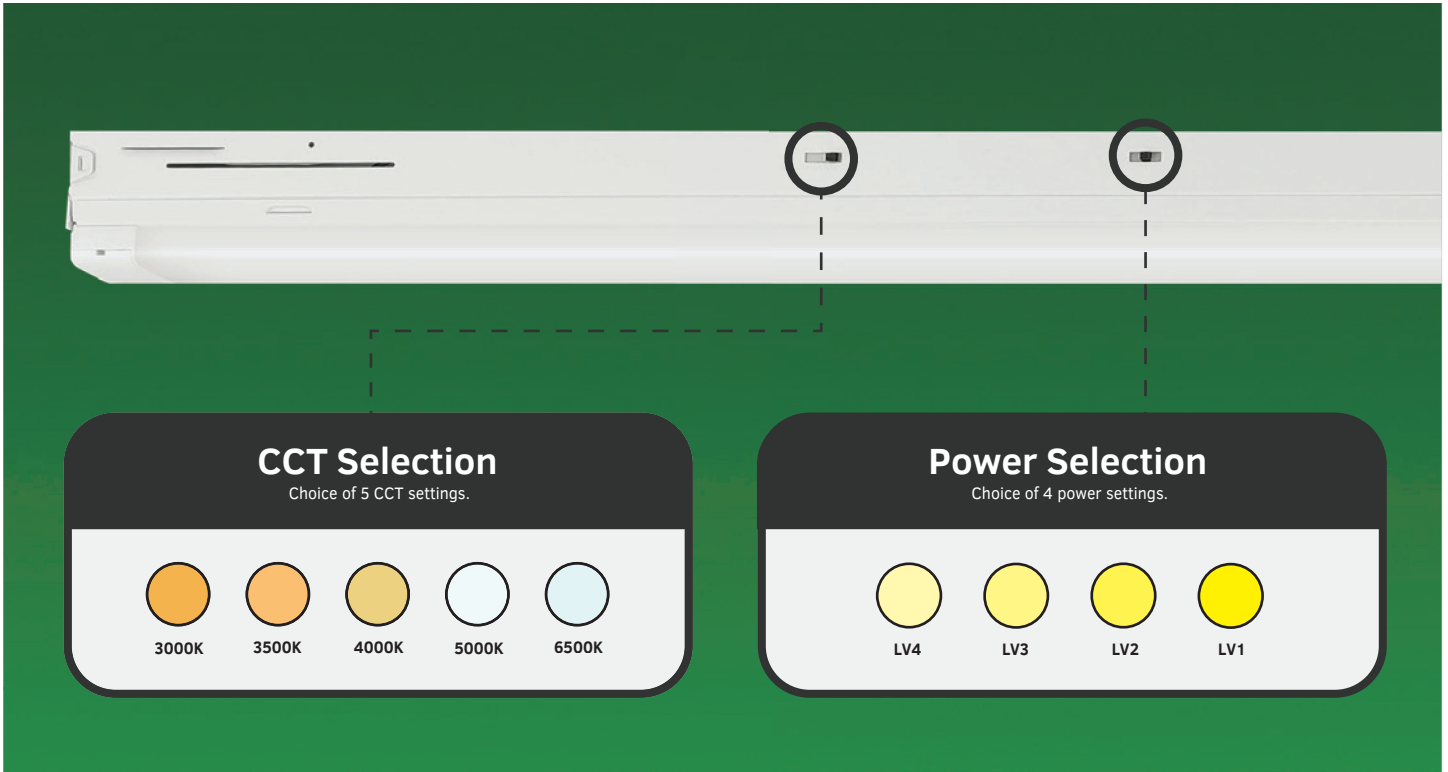
INSTALLATION:

- Surface mounting included.
- Optional steel mounting cable or special order chain mounting kit available for suspension mounting.
- Special order T-grid bracket kit for mounting onto a suspended ceiling.
- Optional row connector brackets allow two linear fixtures to be secured together (field-installed).

LISTINGS:

- DesignLights Consortium® (DLC) Premium qualified (pending).
- UL certified for wet locations.
- Rated for ambient operating temperature -4°F to 104°F (-20°C to 40°C).
- When using an emergency battery backup, rated for ambient operating temperature 50°F to 104°F (10°C to 40°C).

Power & CCT Adjustment Controls



8 Foot Folding Model

Folded Length: 4ft



Unfolded Length: 8ft



The 8 foot GKOLFG4 linear fixture is available with an innovative internal hinge design, allowing it to fold in half. This fixture reduces packaging materials and lowers shipping, storage space, and additional costs. Once unpacked, it easily unfolds and locks securely for effortless installation.

Performance Data

| 2FT 24W 5 CCT Selectable | | | | | | | | | | | |
|------------------------------|--------------|---------------|----------|---------------|----------|---------------|----------|---------------|----------|---------------|----------|
| Switch Setting | System Watts | 2700K (80CRI) | | 3000K (80CRI) | | 3500K (80CRI) | | 4000K (80CRI) | | 5000K (80CRI) | |
| | | Lumens | Efficacy | Lumens | Efficacy | Lumens | Efficacy | Lumens | Efficacy | Lumens | Efficacy |
| LV1 | 24W | 3217lm | 134lm/W | 3456lm | 144lm/W | 3662lm | 153lm/W | 3676lm | 153lm/W | 3602lm | 150lm/W |
| LV2 | 20W | 2751lm | 138lm/W | 2897lm | 145lm/W | 3075lm | 154lm/W | 3087lm | 154lm/W | 3010lm | 151lm/W |
| LV3 | 16W | 2248lm | 141lm/W | 2367lm | 148lm/W | 2513lm | 157m/W | 2523lm | 158m/W | 2470lm | 154m/W |
| LV4 | 10W | 1428lm | 143lm/W | 1503lm | 150lm/W | 1596lm | 160lm/W | 1602lm | 160lm/W | 1569lm | 157lm/W |

NOTE: 2FT model is special order only.

| 4FT 40W 5 CCT Selectable | | | | | | | | | | | |
|------------------------------|--------------|---------------|----------|---------------|----------|---------------|----------|---------------|----------|---------------|----------|
| Switch Setting | System Watts | 3000K (80CRI) | | 3500K (80CRI) | | 4000K (80CRI) | | 5000K (80CRI) | | 6500K (80CRI) | |
| | | Lumens | Efficacy | Lumens | Efficacy | Lumens | Efficacy | Lumens | Efficacy | Lumens | Efficacy |
| LV1 | 40W | 5400lm | 135lm/W | 5600lm | 140lm/W | 5700lm | 143lm/W | 5700lm | 143lm/W | 5600lm | 140lm/W |
| LV2 | 34W | 4700lm | 138lm/W | 4800lm | 141lm/W | 5000lm | 147lm/W | 5000lm | 147lm/W | 4800lm | 141lm/W |
| LV3 | 28W | 4000lm | 143lm/W | 4100lm | 146lm/W | 4200lm | 150m/W | 4200m | 150m/W | 4100lm | 146m/W |
| LV4 | 22W | 3200lm | 145lm/W | 3300lm | 150lm/W | 3400lm | 155lm/W | 3400lm | 155lm/W | 3300lm | 150lm/W |

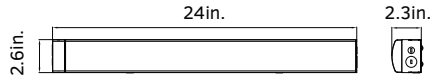
| 8FT 70W 5 CCT Selectable | | | | | | | | | | | |
|------------------------------|--------------|---------------|----------|---------------|----------|---------------|----------|---------------|----------|---------------|----------|
| Switch Setting | System Watts | 3000K (80CRI) | | 3500K (80CRI) | | 4000K (80CRI) | | 5000K (80CRI) | | 6500K (80CRI) | |
| | | Lumens | Efficacy | Lumens | Efficacy | Lumens | Efficacy | Lumens | Efficacy | Lumens | Efficacy |
| LV1 | 70W | 9500lm | 136lm/W | 9800lm | 140lm/W | 10000lm | 143lm/W | 10000lm | 143lm/W | 9800lm | 140lm/W |
| LV2 | 62W | 8600lm | 139lm/W | 8900lm | 144lm/W | 9100lm | 147lm/W | 9100lm | 147lm/W | 8900lm | 144m/W |
| LV3 | 54W | 7700lm | 143lm/W | 7900lm | 146lm/W | 8100lm | 150m/W | 8100lm | 150m/W | 7900lm | 146m/W |
| LV4 | 46W | 6700lm | 146lm/W | 6900lm | 150lm/W | 7100lm | 154lm/W | 7100lm | 154lm/W | 6900lm | 150lm/W |

Electrical Data

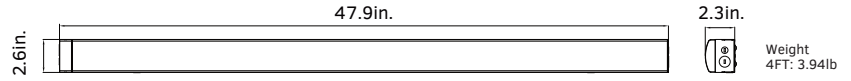
| Number of Drivers | Driver Current (mA) | Nominal Power (W) | Input Voltage (V) | Current (Amps) |
|-------------------|---------------------|-------------------|-------------------|----------------|
| 1 | 510 | 24 | 120 | 0.20 |
| | | 24 | 208 | 0.12 |
| | | 24 | 240 | 0.10 |
| | | 24 | 277 | 0.09 |
| 1 | 830 | 40 | 120 | 0.33 |
| | | 40 | 208 | 0.19 |
| | | 40 | 240 | 0.17 |
| | | 40 | 277 | 0.14 |
| 1 | 1470 | 70 | 120 | 0.58 |
| | | 70 | 208 | 0.34 |
| | | 70 | 240 | 0.29 |
| | | 70 | 277 | 0.25 |

Dimensions & Weight

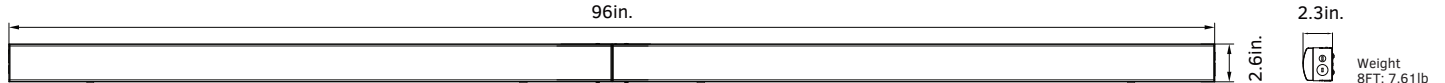
2FT (Special Order)



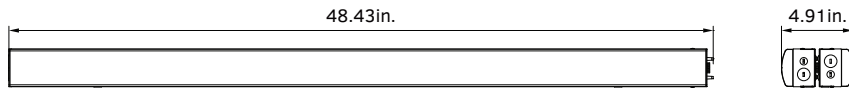
4FT



8FT Folding Configuration



Unfolded Dimensions



Folded Dimensions

Accessories



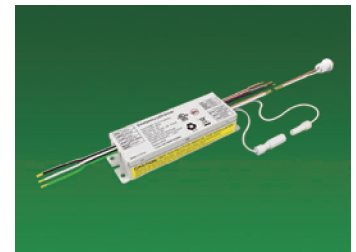
BLUETOOTH NLC LISTED PIR MOTION SENSOR
Optional field-installed, center-mounted plug & play Bluetooth PIR motion sensor adds Networked Control functionality utilizing a Bluetooth SIG mesh network operated with iOS, Android, and web.



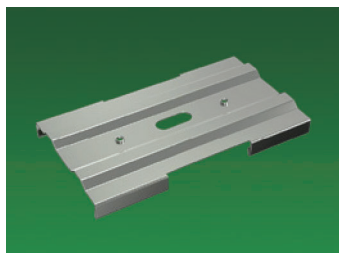
MICROWAVE MOTION SENSOR
Special order internal microwave motion sensor detects occupancy in an area for additional energy savings.



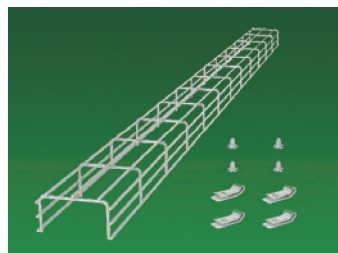
MOTION SENSOR REMOTE CONTROL
Optional remote control is required to program the motion sensor with advanced lighting control options.



EMERGENCY BATTERY BACKUP
Optional factory-installed emergency battery backup provides up to 90 minutes of operation during power outages.



ROW CONNECTOR BRACKET
Optional field-installed row connector bracket easily snaps in place to connect multiple fixtures for continuous row mounting.



WIRE GUARD
Special order wire guard kit protects the fixture lens from impact damage (for 4ft and 8ft models only).

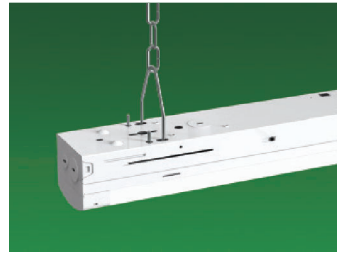
Mounting Options



SURFACE MOUNTING
Default surface mounting kit allows flush mounting to a ceiling.



CABLE MOUNTING
Optional 5ft steel mounting cable allows suspension mounting from a ceiling.



CHAIN MOUNTING
Special order 3.5ft chain and V-Hook mounting kit allows chain mounting from a ceiling.



T-GRID MOUNTING
Special order T-grid bracket kit allows flush mounting to a suspended ceiling.

Ordering Information

| Linear Fixture Series GKOLFG4 | | | | | | | | | | Example: GKOLFG42F24W27VDDKYYYYYY | | |
|-------------------------------|---------------------|---------|--------------|----------------------------|---------|--------------------------|---------------------------------|-----------------------|-------------------------------|---|--|--|
| Fixture Type | Size | Wattage | Voltage | CCT | Finish | Sensor (Optional) | Battery Backup (Optional) | Mounting | Adjustment Dial | Internal Code | | |
| GKOLFG4 | 2F 2FT ¹ | 24W | 27V 120-277V | DDK Power & CCT Selectable | W White | M With Sensor | B With Emergency Battery | SM Surface Mount | AD With Adjustment Dial | Blank Alphanumeric 1 Folding ² Option | | |
| | 4F 4FT | 40W | | | | R With Sensor Receptacle | Blank Without Emergency Battery | CI Chain Installation | Blank Without Adjustment Dial | | | |
| | 8F 8FT | 70W | | | | Blank Without Sensor | SI Steel Cable Installation | TG T-Grid Mount | Blank Without Accessories | | | |

NOTE: 1. 2FT model is special order only.
2. Folding option is standard for for 8FT model and is not available for other sizes.