



DUSK TO DAWN

SERIES GKODDG5



45W / 65W / 90W

Product Overview

High performing GKODDG5 Dusk To Dawn lights are ideal for providing commercial and residential properties with general perimeter and security lighting. With durable die-cast aluminum housing and advanced LED technology, they are the perfect replacement for a traditional metal halide dusk to dawn. An optional mounting arm is available for increased reach.



Key Features

CONSTRUCTION:

- Rugged die-cast aluminum housing.
- Housing is completely sealed against moisture and environmental contaminants.

FINISH:

- The exterior is protected by a rust-resistant polyester powder coat finish that provides superior resistance to weathering and corrosion.

OPTICS:

- Light engines are available in standard 4000K and 5000K configurations.
- A range of lumen options available from 6,200 to 12,400 Lumens, replaces up to 250W metal halide.

ELECTRICAL:

- Standard 120-277V input voltage.
- 6KV surge protection on 65W and 90W models.
- 1-10V dimming driver(s) as default.
- THD: ≤20%, Power Factor: ≥90%.

CONTROLS:

- Twist-lock photocell included by default - P0 120-277V (field-installed).

INSTALLATION:

- Pole mount or wall mount options are available.
- Optional mounting arm is available for increased reach.

WARRANTY:

- 5 Year Limited Warranty.

LISTINGS:

- DesignLights Consortium® (DLC) Premium qualified.
- UL listed for wet locations.
- Rated for ambient operating temperature -40°F to 104°F (-40°C to 40°C).



100 E. Crossroads Pkwy. Ste. C
Bolingbrook, IL 60440
Phone: 630-793-9449
Web: www.gkoled.com

Performance Data

Lumen Output

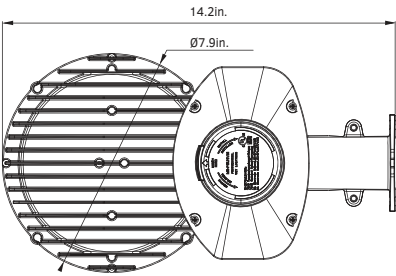
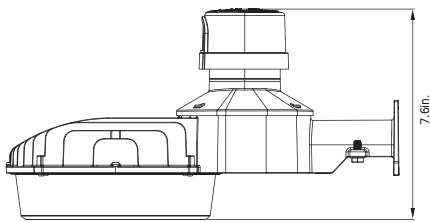
System Watts	Voltage	4000K(70CRI)		5000K(70CRI)	
		Lumens	Efficacy	Lumens	Efficacy
45W	120-277V	6200lm	138lm/W	6200lm	138lm/W
65W	120-277V	8800lm	135lm/W	8800lm	135lm/W
90W	120-277V	12400lm	138lm/W	12400lm	138lm/W

Electrical Data

Number of Drivers	Driver Current (mA)	Nominal Power (W)	Input Voltage (V)	Current (Amps)
1	1100	45	120	0.38
		45	208	0.22
		45	240	0.19
		45	277	0.16
1	1630	65	120	0.54
		65	208	0.31
		65	240	0.27
		65	277	0.23
1	2270	90	120	0.75
		90	208	0.43
		90	240	0.38
		90	277	0.32

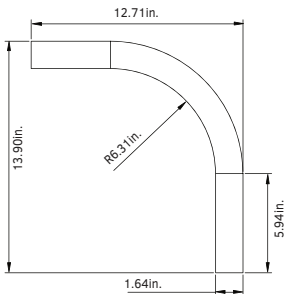
Dimensions & Weight

GKODDG5: 45W / 65W / 90W

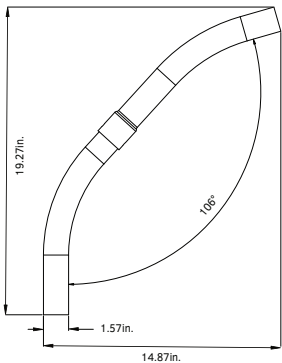


Weight
 45W: 4.54 lb.
 65W: 4.80 lb.
 95W: 5.03 lb.

Mounting Arm - Dark Bronze

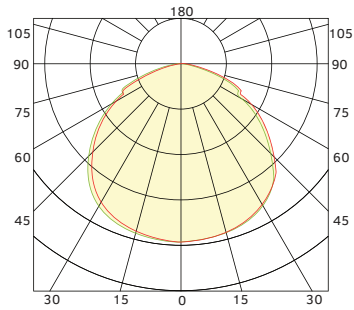


Mounting Arm - Silver Gray



Photometric Distribution

General



Ordering Information

Dusk To Dawn Series GKODDG5					Example: GKODDG545W27V50KSGP0		
Fixture Type	Wattage	Voltage	CCT	Finish	Photocell	Internal Code	
<input type="text"/>	<input type="text"/>	<input type="text"/>	<input type="text"/>	<input type="text"/>	<input type="text"/>	<input type="text"/>	
GKODDG5	45W 65W 90W	27V 120-277V	40K 4000K 50K 5000K	SG Silver Gray* D Dark Bronze* B Black W White	P0 With Photocell	Blank Alphanumeric	

NOTE: *Default finish is silver gray or dark bronze. All other finishes are special order only.