



4FT: 40W  
8FT: 70W

## Product Overview

Power & CCT Selectable Series GKOLFG4 Linear Fixtures are an energy-efficient replacement for traditional T8, T5H0, or HID lights. Available in stocked 4ft and 8ft and special order 2ft configurations, they are ideal for lower ceiling heights.



## Key Features

### CONSTRUCTION:

- Rugged cold-rolled steel housing in a slim and modern design.
- Standard 2ft, 4ft, and 8ft sizes can be extended using row connectors.
- 8ft model features a default folding configuration for cost-effective shipping.

### FINISH:

- The exterior is protected by a white rust-resistant powder coat finish that provides superior resistance to weathering and corrosion.

### OPTICS:

- Light engines are available in 5 CCT selectable configurations.
  - 2FT: 2700K, 3000K, 3500K, 4000K, 5000K.
  - 4FT & 8FT: 3000K, 3500K, 4000K, 5000K, 6500K
- A range of lumen options available from 1,428 to 10,000 Lumens.
- <5 SDCM color consistency with 80CRI.
- Polycarbonate lens is precisely designed to give a specific light distribution, maximizing efficiency and application spacing.

### ELECTRICAL:

- Universal 120-277V input voltage.
- Standard 6KV surge protection.
- 0-10V dimming driver(s) as default.
- THD: ≤20%, Power Factor: ≥90%.

### WARRANTY:

- 5 Year Limited Warranty.

### CONTROLS:

- Power & CCT adjustment controls are included, enabling power selection from 4 power levels and CCT selection from 5 CCT levels.
- Special order microwave motion sensor for additional energy savings - HD027VCR-2.
- Optional RC-100 motion sensor remote control - required for changing the motion sensor default settings, allows the user to program multiple sensors with ease and program the sensor after the fixture is installed.
- Optional emergency battery backup provides up to 90 minutes of operation during outages (factory-installed).
- Bluetooth NLC Listed plug & play PIR motion sensor, utilizing a Bluetooth SIG mesh network operated with iOS, Android, and web, optional for all models - ANT-1P-5T-BLE-SR (field-installed).

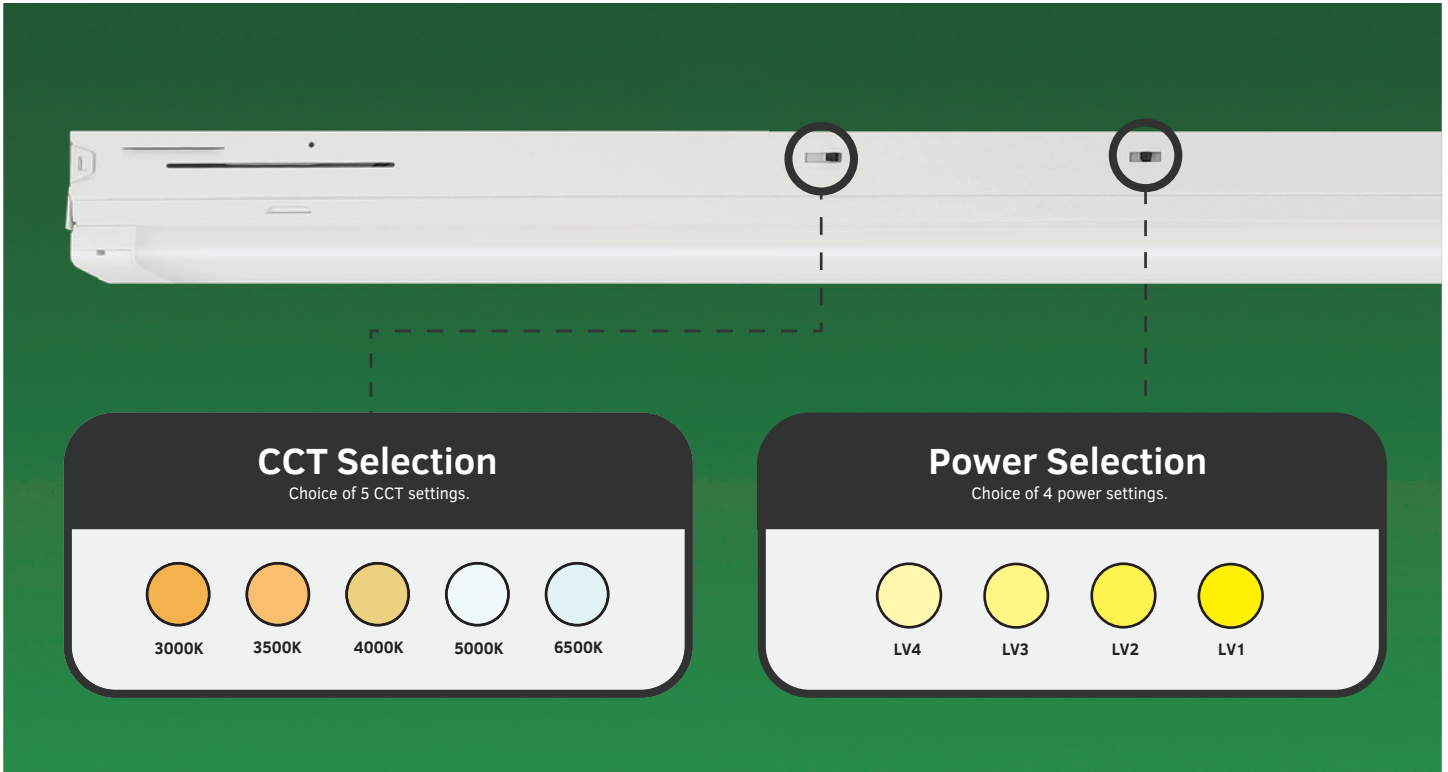
### INSTALLATION:

- Surface mounting included.
- Optional steel mounting cable or special order chain mounting kit available for suspension mounting.
- Special order T-grid bracket kit for mounting onto a suspended ceiling.
- Optional row connector brackets allow two linear fixtures to be secured together (field-installed).

### LISTINGS:

- DesignLights Consortium® (DLC) Premium qualified (pending).
- UL certified for damp locations.
- Rated for ambient operating temperature -4°F to 104°F (-20°C to 40°C).
- When using an emergency battery backup, rated for ambient operating temperature 50°F to 104°F (10°C to 40°C).

## Power & CCT Adjustment Controls



## 8 Foot Folding Model

### Folded Length: 4ft



### Unfolded Length: 8ft



The 8 foot GKOLFG4 linear fixture is available with an innovative internal hinge design, allowing it to fold in half. This fixture reduces packaging materials and lowers shipping, storage space, and additional costs. Once unpacked, it easily unfolds and locks securely for effortless installation.

# Performance Data

2FT   24W   5 CCT Selectable											
Switch Setting	System Watts	2700K (80CRI)		3000K (80CRI)		3500K (80CRI)		4000K (80CRI)		5000K (80CRI)	
		Lumens	Efficacy	Lumens	Efficacy	Lumens	Efficacy	Lumens	Efficacy	Lumens	Efficacy
LV1	24W	3217lm	134lm/W	3456lm	144lm/W	3662lm	153lm/W	3676lm	153lm/W	3602lm	150lm/W
LV2	20W	2751lm	138lm/W	2897lm	145lm/W	3075lm	154lm/W	3087lm	154lm/W	3010lm	151lm/W
LV3	16W	2248lm	141lm/W	2367lm	148lm/W	2513lm	157m/W	2523lm	158m/W	2470lm	154m/W
LV4	10W	1428lm	143lm/W	1503lm	150lm/W	1596lm	160lm/W	1602lm	160lm/W	1569lm	157lm/W

NOTE: 2FT model is special order only.

4FT   40W   5 CCT Selectable											
Switch Setting	System Watts	3000K (80CRI)		3500K (80CRI)		4000K (80CRI)		5000K (80CRI)		6500K (80CRI)	
		Lumens	Efficacy	Lumens	Efficacy	Lumens	Efficacy	Lumens	Efficacy	Lumens	Efficacy
LV1	40W	5400lm	135lm/W	5600lm	140lm/W	5700lm	143lm/W	5700lm	143lm/W	5600lm	140lm/W
LV2	34W	4700lm	138lm/W	4800lm	141lm/W	5000lm	147lm/W	5000lm	147lm/W	4800lm	141lm/W
LV3	28W	4000lm	143lm/W	4100lm	146lm/W	4200lm	150m/W	4200m	150m/W	4100lm	146m/W
LV4	22W	3200lm	145lm/W	3300lm	150lm/W	3400lm	155lm/W	3400lm	155lm/W	3300lm	150lm/W

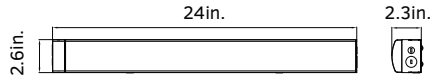
8FT   70W   5 CCT Selectable											
Switch Setting	System Watts	3000K (80CRI)		3500K (80CRI)		4000K (80CRI)		5000K (80CRI)		6500K (80CRI)	
		Lumens	Efficacy	Lumens	Efficacy	Lumens	Efficacy	Lumens	Efficacy	Lumens	Efficacy
LV1	70W	9500lm	136lm/W	9800lm	140lm/W	10000lm	143lm/W	10000lm	143lm/W	9800lm	140lm/W
LV2	62W	8600lm	139lm/W	8900lm	144lm/W	9100lm	147lm/W	9100lm	147lm/W	8900lm	144m/W
LV3	54W	7700lm	143lm/W	7900lm	146lm/W	8100lm	150m/W	8100lm	150m/W	7900lm	146m/W
LV4	46W	6700lm	146lm/W	6900lm	150lm/W	7100lm	154lm/W	7100lm	154lm/W	6900lm	150lm/W

## Electrical Data

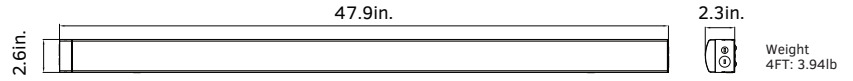
Number of Drivers	Driver Current (mA)	Nominal Power (W)	Input Voltage (V)	Current (Amps)
1	510	24	120	0.20
		24	208	0.12
		24	240	0.10
		24	277	0.09
1	830	40	120	0.33
		40	208	0.19
		40	240	0.17
		40	277	0.14
1	1470	70	120	0.58
		70	208	0.34
		70	240	0.29
		70	277	0.25

# Dimensions & Weight

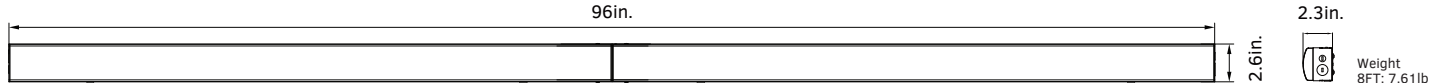
## 2FT (Special Order)



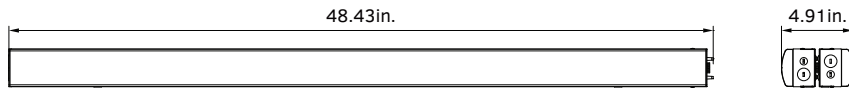
## 4FT



## 8FT Folding Configuration



Unfolded Dimensions



Folded Dimensions

# Accessories



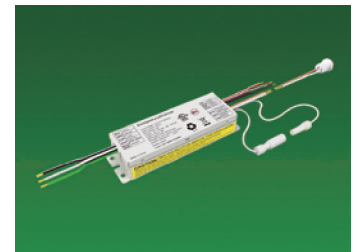
**BLUETOOTH NLC LISTED PIR MOTION SENSOR**  
Optional field-installed, center-mounted plug & play Bluetooth PIR motion sensor adds Networked Control functionality utilizing a Bluetooth SIG mesh network operated with iOS, Android, and web.



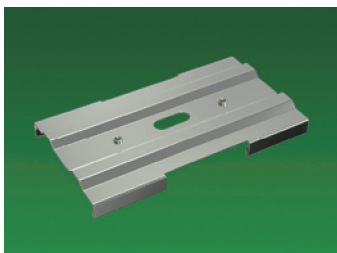
**MICROWAVE MOTION SENSOR**  
Special order internal microwave motion sensor detects occupancy in an area for additional energy savings.



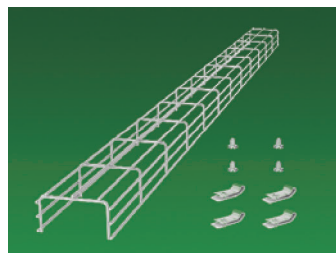
**MOTION SENSOR REMOTE CONTROL**  
Optional remote control is required to program the motion sensor with advanced lighting control options.



**EMERGENCY BATTERY BACKUP**  
Optional factory-installed emergency battery backup provides up to 90 minutes of operation during power outages.



**ROW CONNECTOR BRACKET**  
Optional field-installed row connector bracket easily snaps in place to connect multiple fixtures for continuous row mounting.



**WIRE GUARD**  
Special order wire guard kit protects the fixture lens from impact damage (for 4ft and 8ft models only).

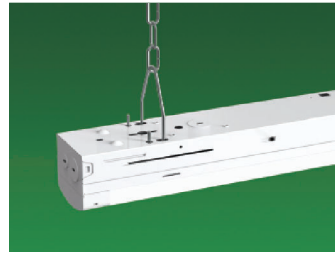
# Mounting Options



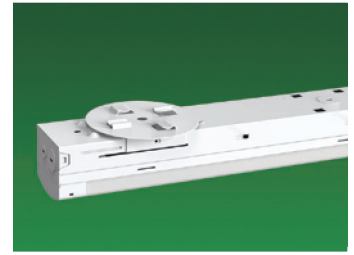
**SURFACE MOUNTING**  
Default surface mounting kit allows flush mounting to a ceiling.



**CABLE MOUNTING**  
Optional 5ft steel mounting cable allows suspension mounting from a ceiling.



**CHAIN MOUNTING**  
Special order 3.5ft chain and V-Hook mounting kit allows chain mounting from a ceiling.



**T-GRID MOUNTING**  
Special order T-grid bracket kit allows flush mounting to a suspended ceiling.

# Ordering Information

Linear Fixture Series GKOLFG4										Example: GKOLFG42F24W27VDDKYYYYYY		
Fixture Type	Size	Wattage	Voltage	CCT	Finish	Sensor (Optional)	Battery Backup (Optional)	Mounting	Adjustment Dial	Internal Code		
GKOLFG4	2F 2FT <sup>1</sup>	24W	27V 120-277V	DDK Power & CCT Selectable	W White	M With Sensor	B With Emergency Battery	SM Surface Mount	AD With Adjustment Dial	Blank Alphanumeric 1 Folding <sup>2</sup> Option		
	4F 4FT	40W				R With Sensor Receptacle	Blank Without Emergency Battery	CI Chain Installation	Blank Without Adjustment Dial			
	8F 8FT	70W				Blank Without Sensor	SI Steel Cable Installation	TG T-Grid Mount	Blank Without Accessories			

NOTE: 1. 2FT model is special order only.  
2. Folding option is standard for for 8FT model and is not available for other sizes.